

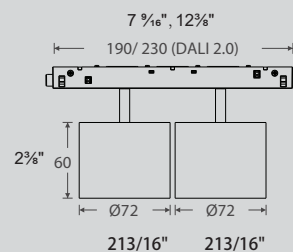
Type:_____ Qty:_____

Project:_____



HELIUM LYTE

SPOT DUO 20



Reflector



Black



White



Chrome Black



Rose Golden

Design Features:

- Easily repositioned on site.
- Premium aluminium housing.
- Made with high powered OSARAM led chip that maintains high lumens per watt.
- Available with 25° / 36° / 50° beam angle.
- Specifiable color temperature.
- CRI > 90
- 0-10V and DALI Dimming option available.
- 5 Year warranty.



Warranty



Dimming



DALI



Intertek

SPOT DUO 20



*Ref. Image

Specs Code:

FIXTURE ID 1	LUMENS / WATT 2	LED OPTION 3	DIMMING 4	BEAM ANGLE 5
SPOT DUO-20 SPOTD20	L1400/20W L140/20W -For 25°	2700K 27K	0-10V DMV	25 Degree 25D
		3000K 30K	DALI DALI	36 Degree 36D
	L1500/20W L150/20W -For 36° & 50°	3500K 35K		50 Degree 50D
		4000K 40K		
FINISH 6	REFLECTOR 7	ACCESSORIES 8		
White WH	White WH	Not Applicable NA		
Black BLK	Black BLK	Honeycomb HC		
Golden GLD	Crome Black CBLK			
	Golden GLD			

Ordering Code:

1
2
3
4
5
6

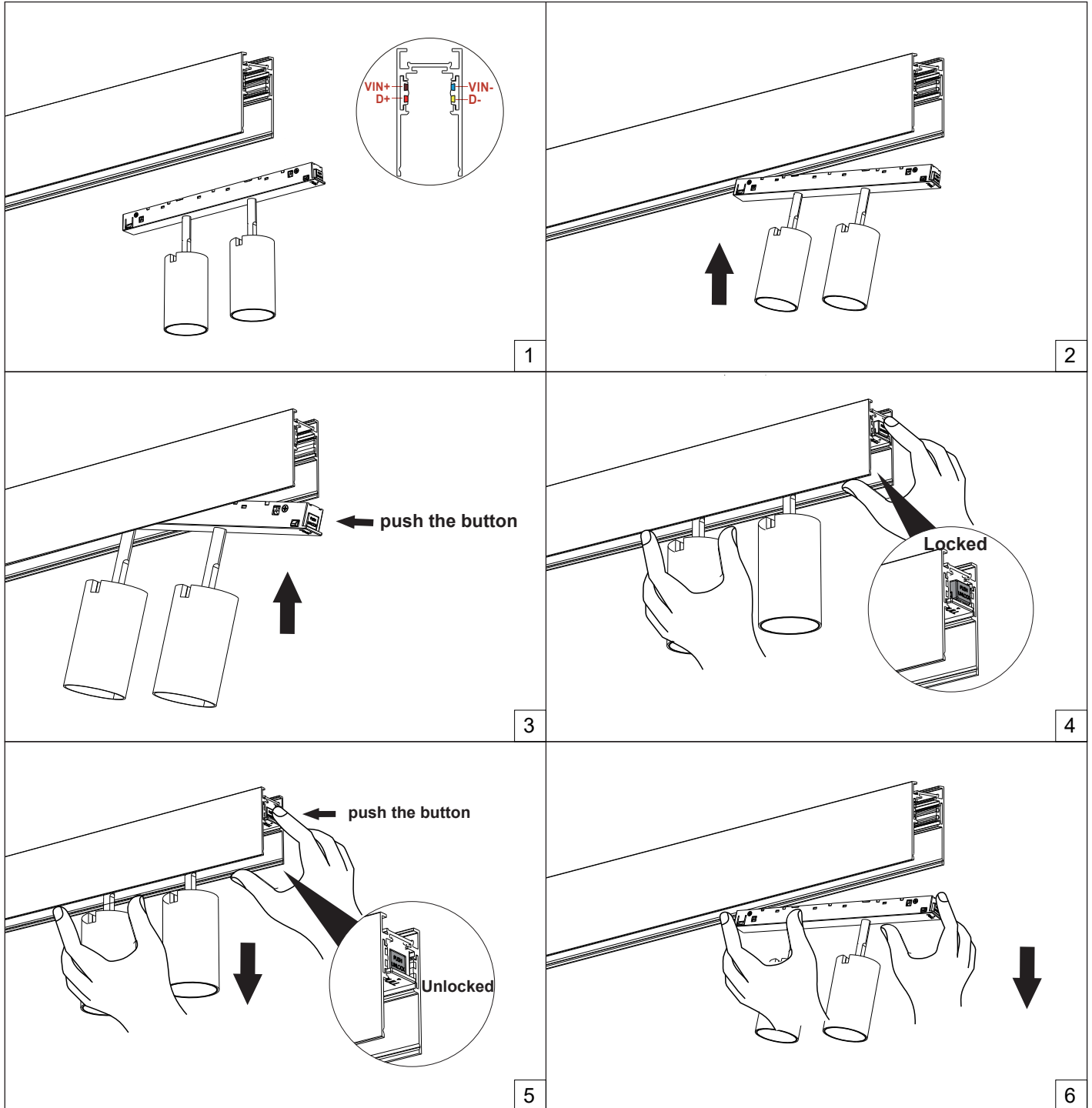
7
8

*Example : SPOTD20-L150/10W-27K-DMV-50D-BLK-CBLK-NA



SPOT DUO 20

Mounting Details:





SPOT DUO 20

Photometric:

Lighting Chart:

WATT	LUMENS	CCT	CRI
20W	1500 lm	3000K	CRI90



Warranty



Dimming



DALI



Intertek



SPOT DUO 20

Technical Details:

Material	Extruded Aluminium
Head Style	Fixed
Finish	White / Black / Golden
Reflector	White / Black / Crome Black / Golden
Lumens	Upto 1500lm
Wattage	20W
Efficacy	75 Lm/W
UGR	<19
CRI	90+
CCT	2700K / 3000K / 3500K / 4000K
Beam Angle	25° / 36° / 50°
Dimming	DALI / 0-10V
Operating Temp.	-20°C ~ 40°C (-4°F ~ 104°F)
Voltage	120V / 120-277V
Housing	Non IC Rated / IC Rated
Certification	ETL LISTED / DRY RATED



Warranty



Dimming



DALI



Intertek