

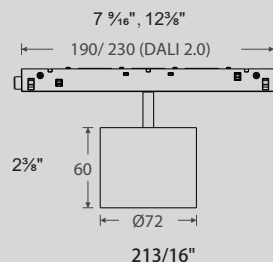
Type:\_\_\_\_\_ Qty:\_\_\_\_\_

Project:\_\_\_\_\_



HELIUM LYTE

# SPOT 10



## Reflector



Black



White



Chrome Black



Rose Golden

## Design Features:

- Easily repositioned on site.
- Premium aluminium housing.
- Made with high powered OSARAM led chip that maintains high lumens per watt.
- Available with 25° / 36° / 50° beam angle.
- Specifiable color temperature.
- CRI > 90
- 0-10V and DALI Dimming option available.
- 5 Year warranty.



Warranty



Dimming



DALI



Intertek



# SPOT 10



\*Ref. Image

## Specs Code:

FIXTURE ID	1	LUMENS / WATT	2	LED OPTION	3	DIMMING	4	BEAM ANGLE	5
SPOT10	SPOT10	L700/10W -For 25°	L70/10W	2700K 3000K 3500K 4000K	27K 30K 35K 40K	0-10V DALI	DMV DALI	25 Degree 36 Degree 50 Degree	25D 36D 50D
		L750/10W -For 36° & 50°	L75/10W						
FINISH	6	REFLECTOR	7	ACCESSORIES	8				
White Black Golden	WH BLK GLD	White Black Crome Black Golden	WH BLK CBLK GLD	Not Applicable Honeycomb	NA HC				

## Ordering Code:

1	2	3	4	5	6
<input type="text"/>	<input type="text"/>	<input type="text"/>	<input type="text"/>	<input type="text"/>	<input type="text"/>
7	8				
<input type="text"/>	<input type="text"/>				

\*Example : SPOT10-L75/10W-27K-DMV-50D-BLK-CBLK-NA



Warranty



Dimming



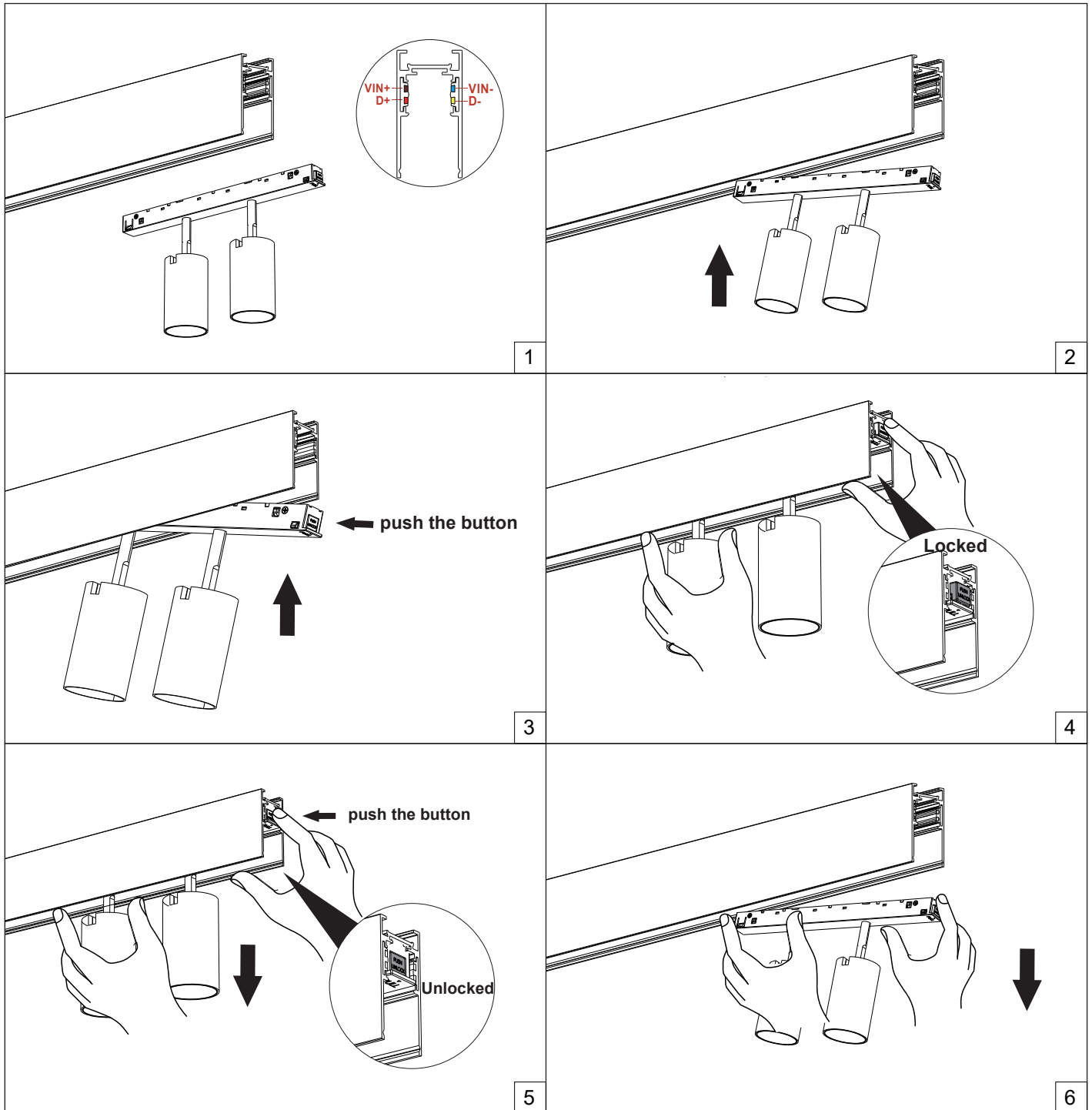
DALI



Intertek

# SPOT 10

## Mounting Details:





# SPOT 10

Photometric:

Lighting Chart:

WATT	LUMENS	CCT	CRI
10W	750 lm	3000K	CRI90



Warranty



Dimming



DALI



Intertek

# SPOT 10

## Technical Details:

Material	Extruded Aluminium
Head Style	Fixed
Finish	White / Black / Golden
Reflector	White / Black / Crome Black / Golden
Lumens	Upto 750lm
Wattage	10W
Efficacy	75 Lm/W
UGR	<19
CRI	90+
CCT	2700K / 3000K / 3500K / 4000K
Beam Angle	25° / 36° / 50°
Dimming	DALI / 0-10V
Operating Temp.	-20°C ~ 40°C (-4°F ~ 104°F)
Voltage	120V / 120-277V
Housing	Non IC Rated / IC Rated
Certification	ETL LISTED / DRY RATED

