

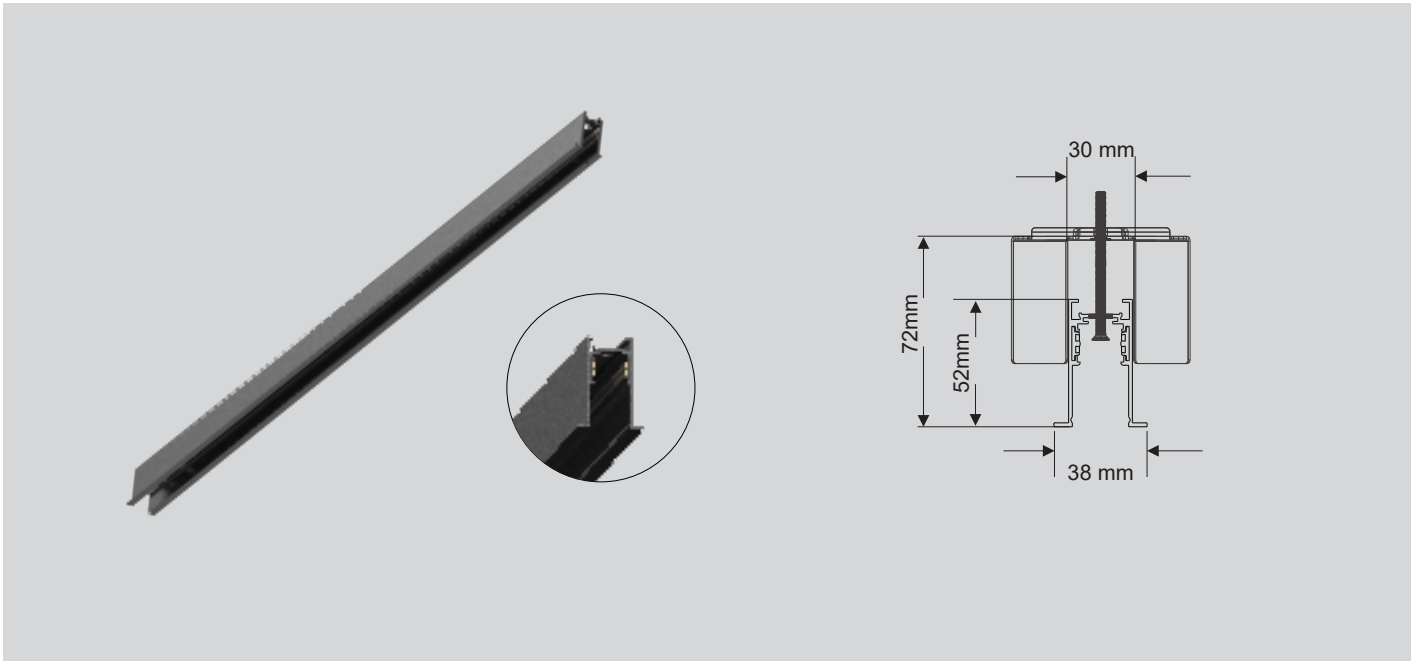
Type: \_\_\_\_\_ Qty: \_\_\_\_\_

Project: \_\_\_\_\_



HELIUM LYTE

# RECESSED TRIM TRACK



## Description:

Our versatile track system seamlessly integrates with lighting fixtures, perfect for commercial and residential spaces. Easily configurable in straight or custom patterns, it offers simple installation and adjustment for tailored illumination solutions.

## Design Features:

- Seamless installation and integration of helium track fixtures.
- Premium extruded aluminium housing.
- Track comes in a 10' max run length.
- Customizable run lengths can be specified.
- High quality powder coating finish.
- Remote constant voltage driver with integral 1% 0-10v and DALI dimming.
- 5 Year warranty.





# RECESSED TRIM TRACK



\*Ref. Image

## Specs Code:

FIXTURE ID	1	LENGTH	2	FINISH	3	DIMMING	4	VOLTAGE	5
Track - Recessed Trim	TRK-RTM	39"	39IN	White -RAL9016	WH	0-10V	DMV	120V	120V
		78"	78IN	Black -RAL9005	BLK	DALI	DALI	120-277V	UNV
		118"	118IN	Custom	CSTM				
		Custom*	CSTM						
		Pattern*	PAT						

\* -Consult factory for custom Length and Pattern.

## Order Guide:

1	2	3	4	5
<input type="text"/>	<input type="text"/>	<input type="text"/>	<input type="text"/>	<input type="text"/>

\*Example : TRK-RTM-78IN-BLK-DMV-UNV



Dimming



DALI

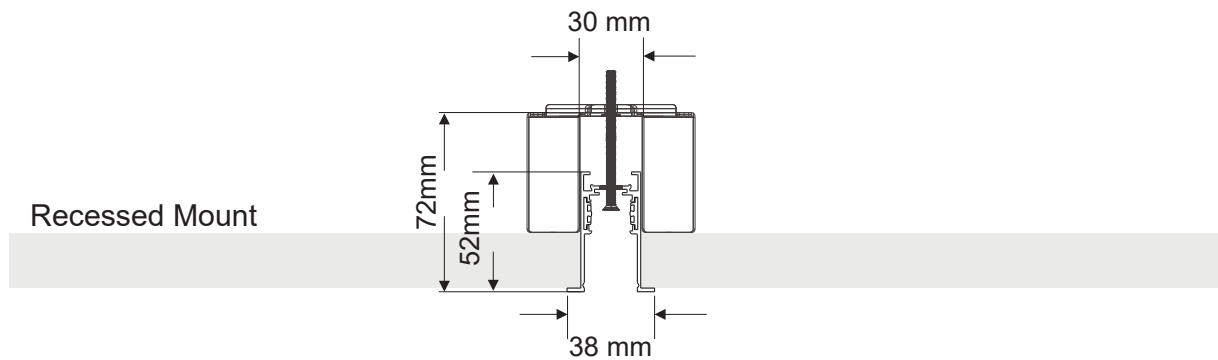


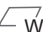
Intertek



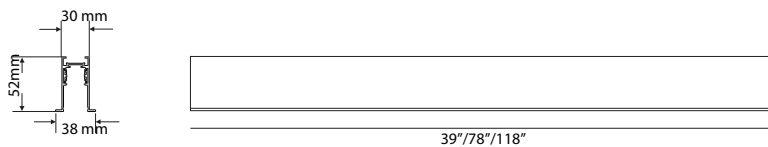
# RECESSED TRIM TRACK

## Mounting Options:



Cutout:  Width 31mm x Length at actual (2010 mm)

## Standard Length





# RECESSED TRIM TRACK

## Technical Details:

Material	Extruded Aluminium
Finish	Polyester Powder Coating
Colour	White -RAL9016 / Black -RAL9005 / Custom
Length	39"* / 78"* / 118"* / Custom
Driver	Remote 48v LED Driver
Max Electrical Run	300 W Each Circuit
Dimming	0-10V / TRIAC
Operating Temp.	-20°C ~ 40°C (-4°F ~ 104°F)
Voltage	120V / 120-277V
Certification	ETL LISTED / DRY RATED

## Disclaimers:

- Standard track lengths includes 2 end caps.
- For custom patterns architectural drawings must be provided.
- Tracks are field cuttable.
- Track system does not include track lighting inserts.



Dimming



DALI



Intertek



# RECESSED TRIM TRACK

Track Jointer Configuration:

Possibility of Patterns:

Square



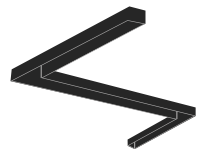
X-Shape



Rectangle



Custom



Note: Consult factory for custom designs.



Dimming



DALI



Intertek

# RECESSED TRIM TRACK

## Accessories:



503041-01RTE



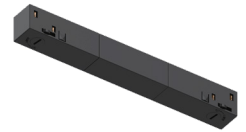
503041-02



503041-03



503041-03A



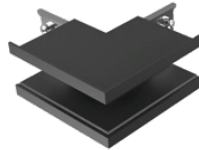
503041-04



503041-08RT



503041-09RT



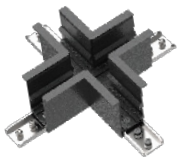
503041-10RT



503041-11



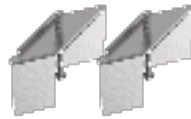
503041-12RT



503041-13RT



503041-16



503041-17

## Accessories Code Guide:

**503041-01RTE** - Recessed trim installation track Endcap Kit (2pcs/ set)1 set for 1pcs track.

**503041-02** - Linear connector with screws.

**503041-03** - Power feeder unit with feeder cables 500mm for recessed mounted.

**503041-03A** - Two way power feeder unit for recessed mounted.

**503041-04** - Straight continuous kit, Electrical.

**503041-08RT** - L shape horizontal connector for recessed trim track with linear connector and flexible electrical connector.

**503041-09RT** - L shape vertical connector for recessed trim track.

**503041-10RT** - L Shape outer connector for recessed trim track.

**503041-11** - Track rail cover 1000mm.

**503041-12RT** - T-Shape connector for recessed trim track with linear connector and flexible electrical connector.

**503041-13RT** - X shape connector for recessed trim track.

**503041-16** - 2 Nos. of Screw & Wall Plug kit.

**503041-17** - 2 set for every continuous 1,000mm track with screw, (2pcs/ set).

