



HELIUM LYTE



HELIUM LYTE



FLEXGLOW

Elevating Spaces With Comprehensive Solutions.

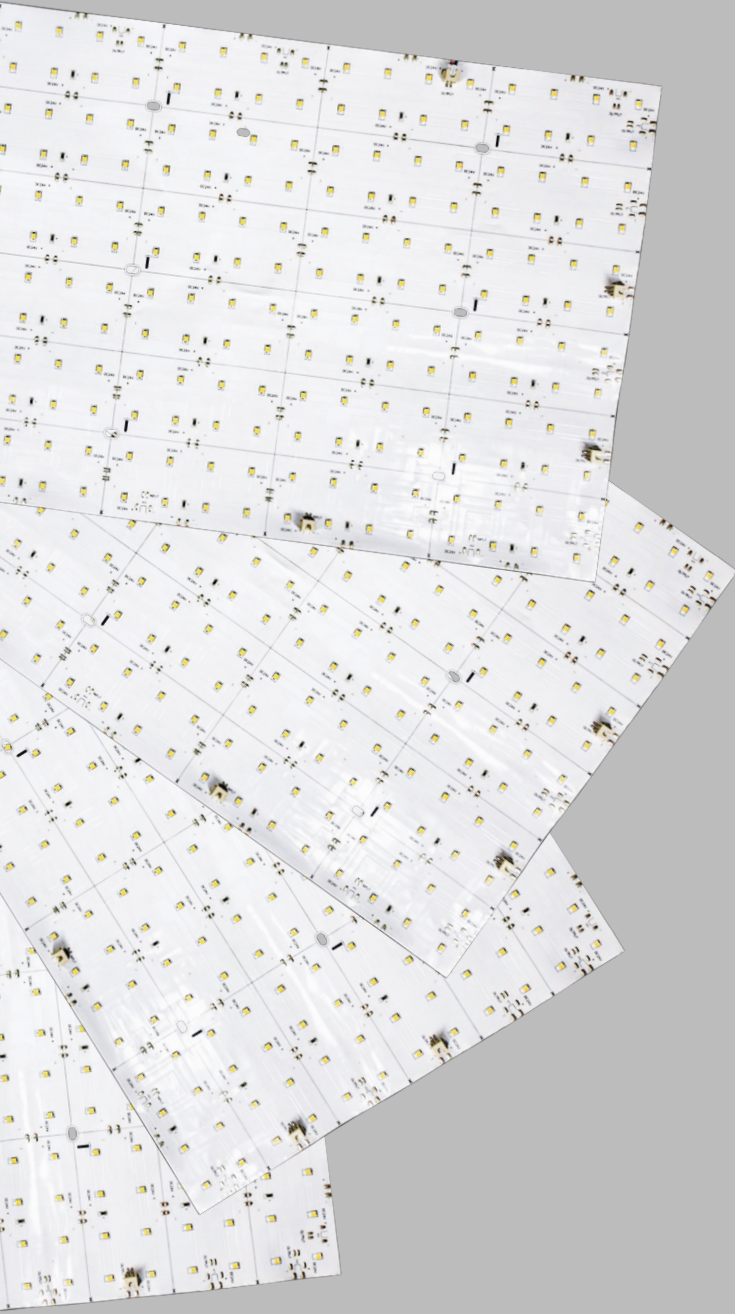
Reference images: Pinterest / archello / Pexels / newmatworld.com

Why Flexglow?

- With HELIUM LYTE Flexglow ,Creating an immersive space that makes you feel englobed by the surrounding light, similarly as when you are outside.
- Vast experience in backlighting, We have the perfect distance between the light source and the diffuser. This creates a perfectly homogeneously lit surface.
- Offers a light weight solution, thanks to its advanced lighting technology and mechanical design.
- Comes pre-wired with integral drivers and controllers. This makes it a quick plug and play installation.
- different options of diffuser offer a Class A or B fire rating.
- 5 Year warranty indoor use .

Flexglow Flexible Sheet

- FLEXGLOW STATIC
- FLEXGLOW STATIC OPTICS
- FLEXGLOW TUNABLE WHITE
- FLEXGLOW RGBW

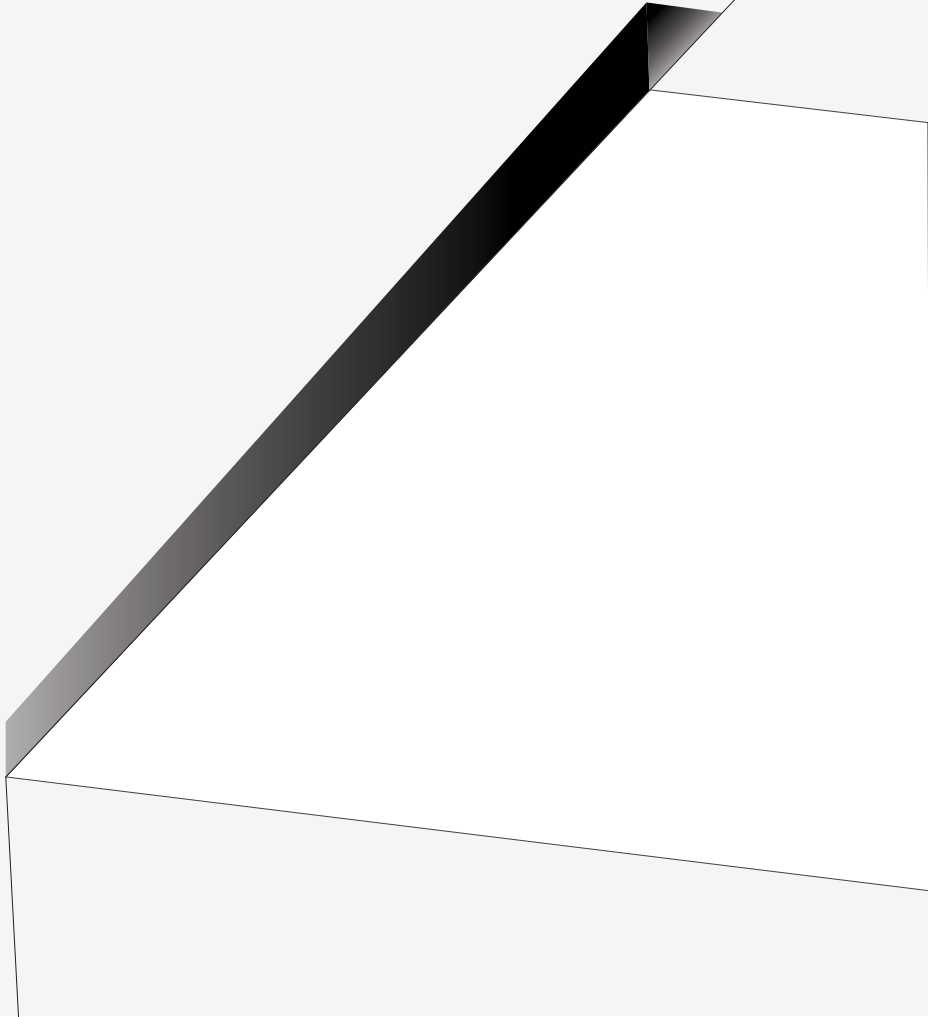


Flexglow Shapes

- FLEXGLOW ROUND
- FLEXGLOW HEXAGON

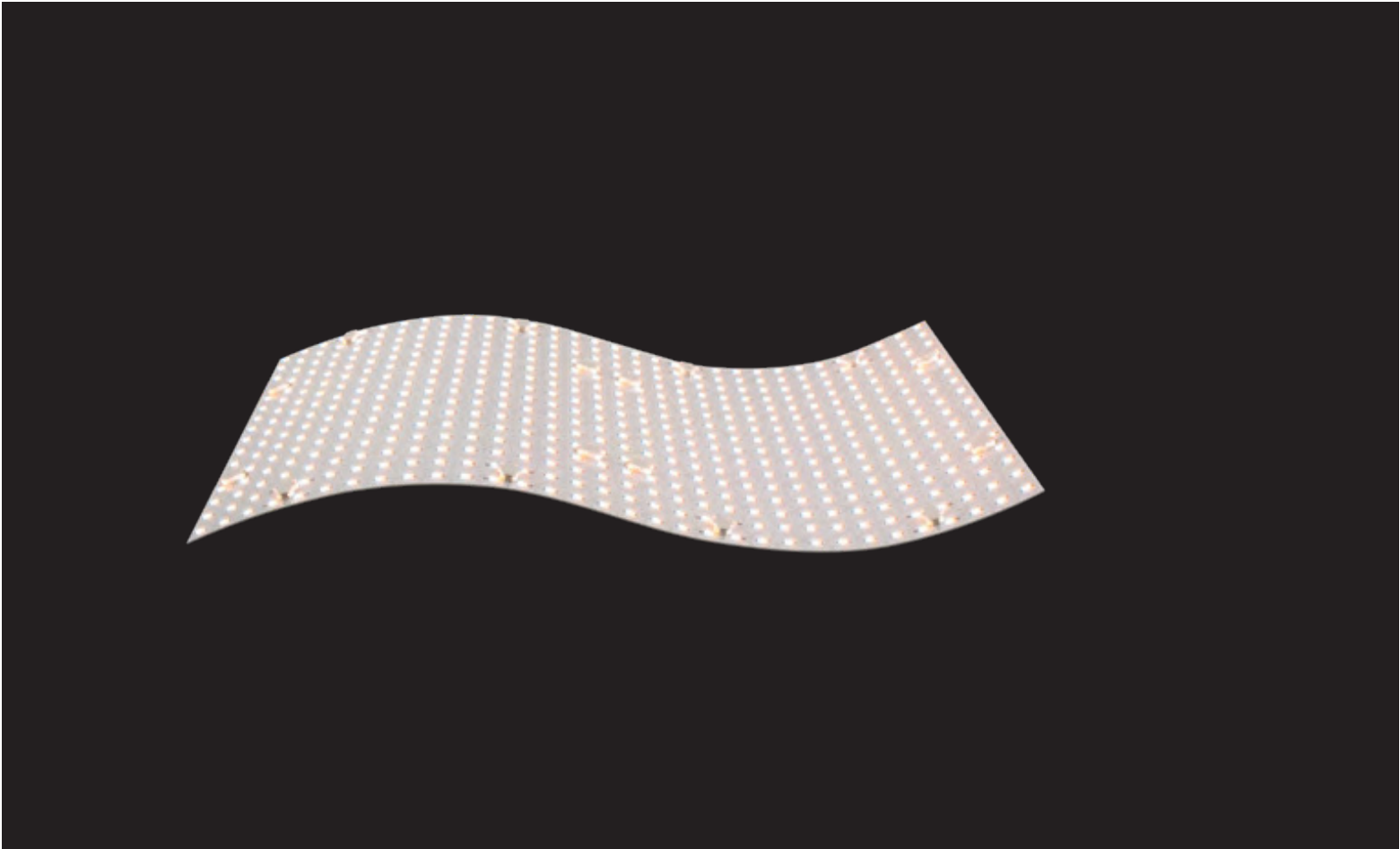
Flexglow Custom

- FULLY CUSTOMIZE SOLUTION FOR YOUR SPACE



DIFC Services

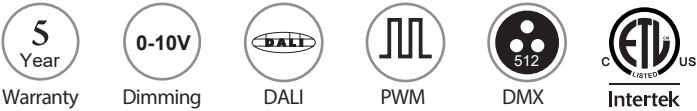
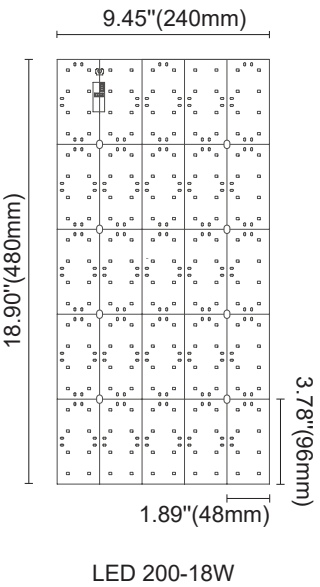
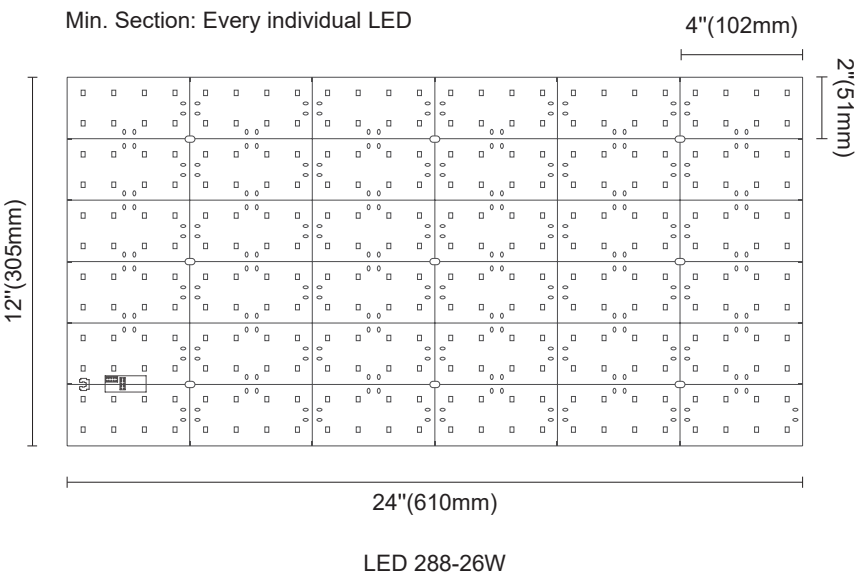
Flexglow Flexible Sheet



- FLEXGLOW STATIC

- CRI90+ up to 140lm/w, CRI95+ up to 120lm/w.
- CRI/TM-30-15: CRI >95 / [Rf>93-Rg>99, R9>94) CRI >90 / [Rf>90-Rg>99, R9>65) .
- Can be cut vertically, horizontally or other shapes.
- Color Consistency : 3SDCM (typical)
- Lumen Maintenance: 55°C: L70/B10>54000hrs, lumen maintenance 88.51%, L90/B10>47000hrs, Lumen maintenance 89.95% , L70/B10>54000hrs, lumen maintenance 86.01%, L90/B10>38000hrs, lumen maintenance 89.95% .
- Easy installation with double-side thermal conductive adhesive tape or 9080H 3M self adhesive tape.
- Plug and Play and Hardwire options available.
- Waterproof: IP64 [Spray Glue Coated) / Nonwaterproof IP22 options available.
- 5 Year warranty indoor use .

Wattage	18W / 26W per sheet	
Efficacy	Upto 160 Lm/W	
Lumens	Upto 4147lm/Pc.	
CRI	80+ / 90+ / 95+	
CCT	2200K	4000K
	2700K	5000K
	3000K	6200K
	3500K	
Dimming	0-10V / DALI / PWM / DMX	

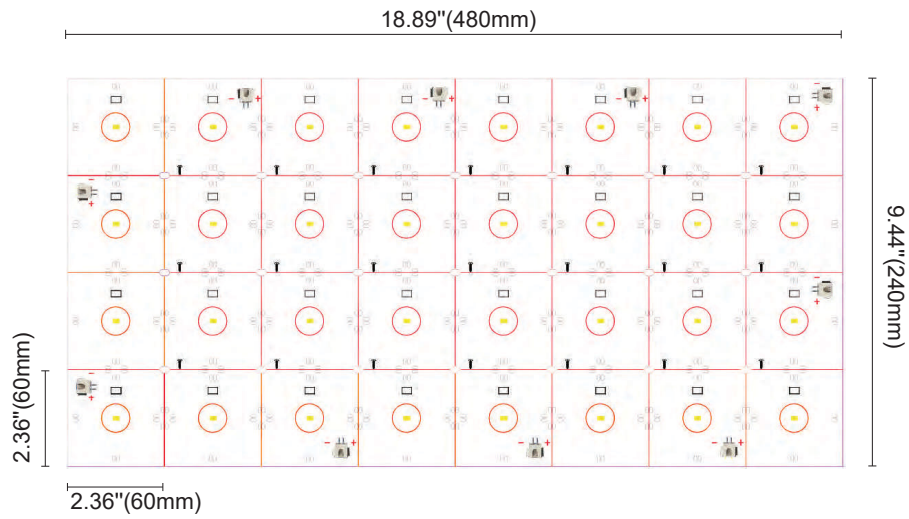




- FLEXGLOW STATIC OPTICS

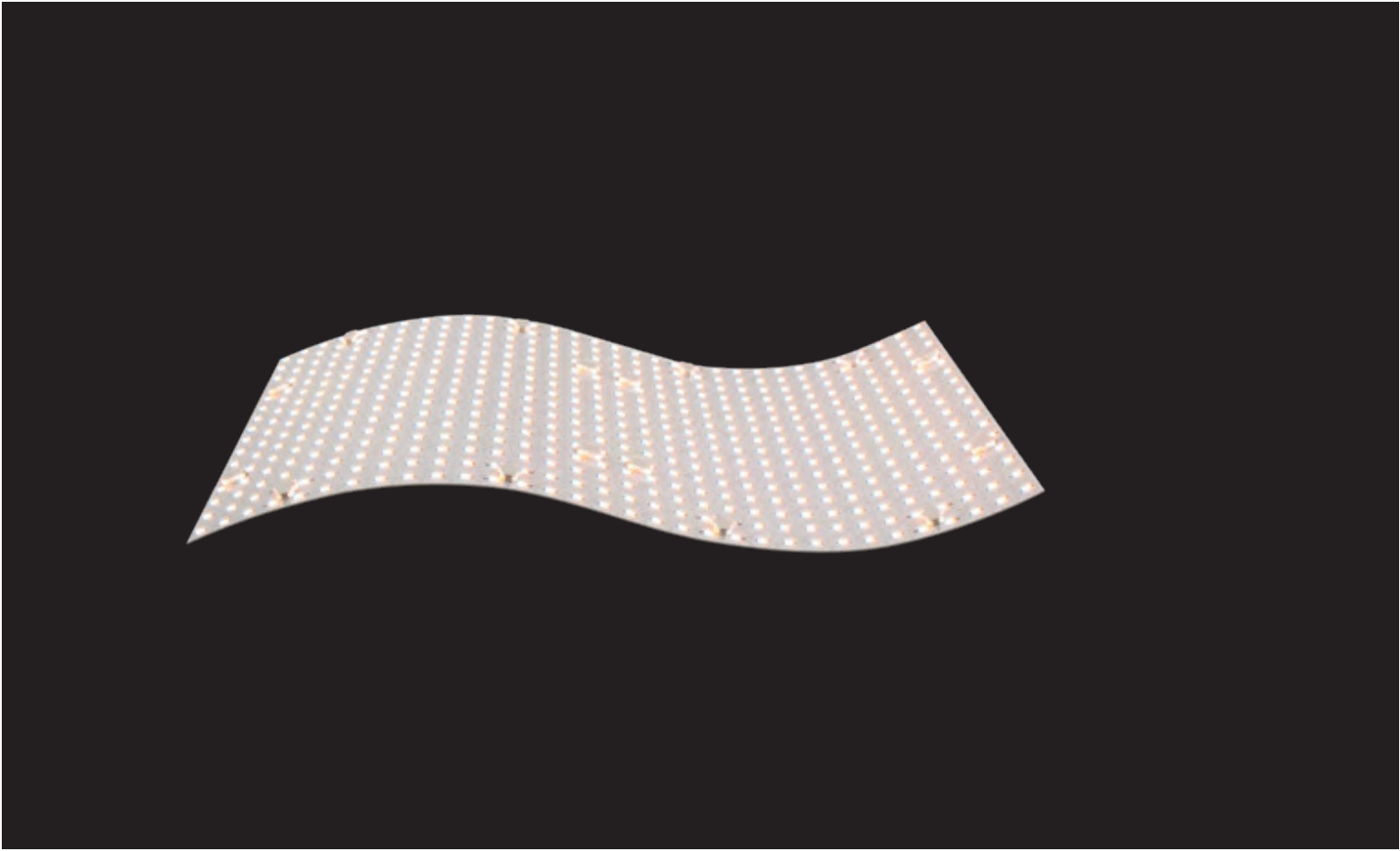
- High efficacy 2016 LED for Uniformity in both color and intensity .
- Flexible printed circuits board for excellent flexibility.
- 175 Degree wide beam angle ensure the uniform lighting in min quantity LED.
- Constant current 12 VDC system.
- Quick connector & soldering spot for easy connection .
- Self-adhesive backside for easy and reliable mounting .
- Minimum cuttable size in 6 X 6cm.
- Ideal for lightbox of depth from 2.5cm to 5cm.
- 5 Year warranty indoor use .

Wattage	11.5W / 23W per sheet	
Efficacy	Upto 73.5 Lm/W	
Lumens	Upto 1710lm/Pc.	
CRI	82+	
CCT	2200K	4000K
	2700K	5000K
	3000K	6200K
	3500K	
Dimming	0-10V / DALI	



Min. Section: [every 1 LED2.36" x 2.36" (60 x 60 mm)]

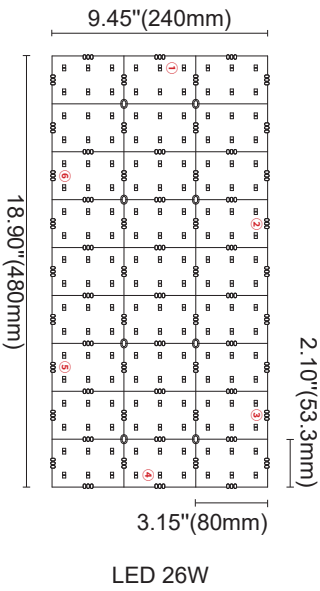
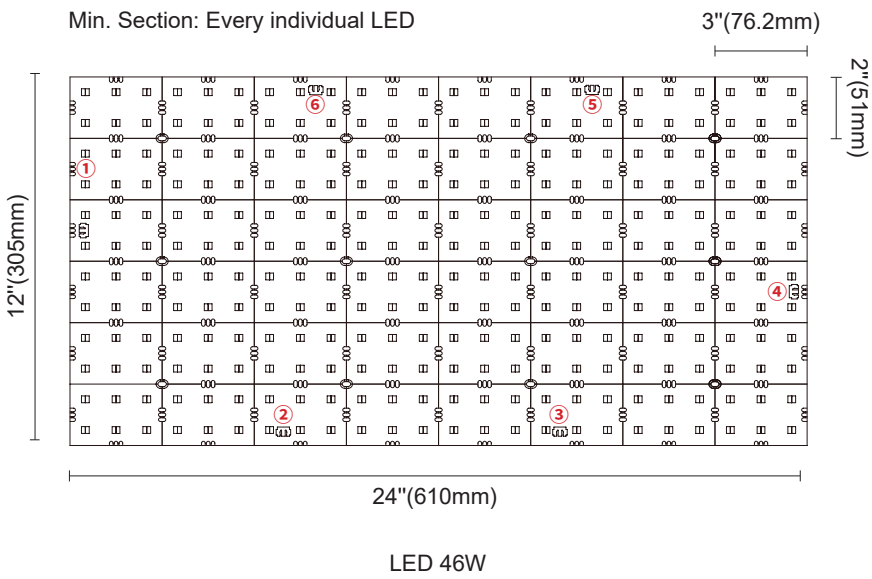


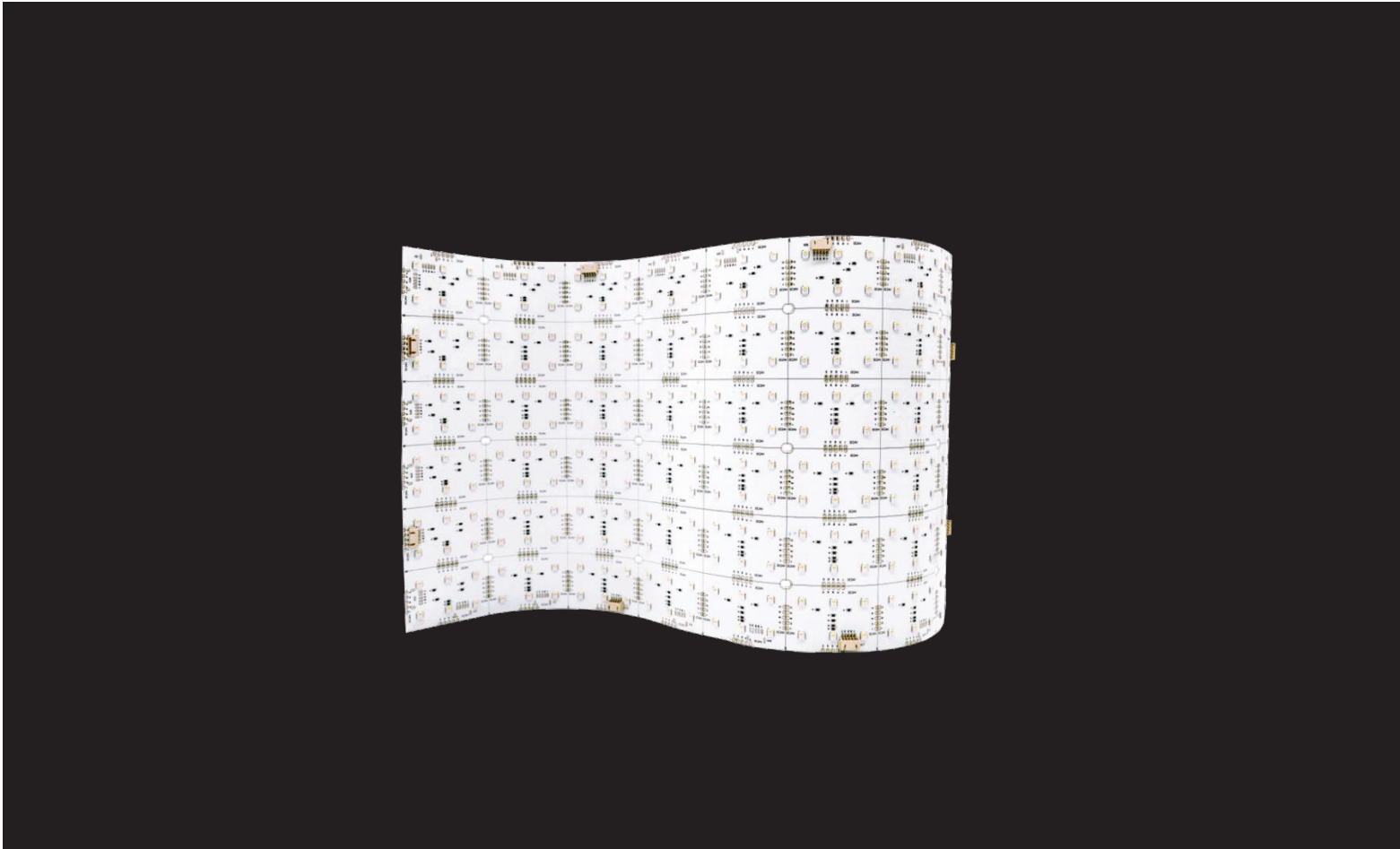


- FLEXGLOW TUNABLE WHITE

- Simple connection and easy installation.
- PCB adopts FPC with high flexibility .
- Can be cut vertically, horizontally or other shapes.
- Suitable for back-lit light box with depth above 4cm, shopping mall decoration,luminous letter,hotels, etc.
- Easy installation with double-side thermal conductive adhesive tape or 9080H 3M self adhesive tape.
- Waterproof: IP64 [Spray Glue Coated) / Nonwaterproof IP22 options available.
- 5 Year warranty indoor use .

Wattage	26W / 46W per sheet	
Efficacy	Upto 100 Lm/W	
Lumens	Upto 3916lm/Pc.	
CRI	95+	
CCT	2200K	4000K
	2700K	5000K
	3000K	6200K
	3500K	
Dimming	0-10V / DALI / DMX	

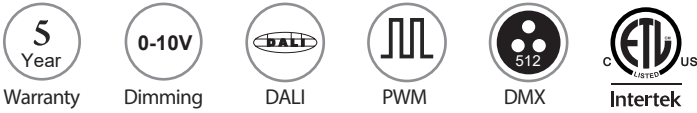
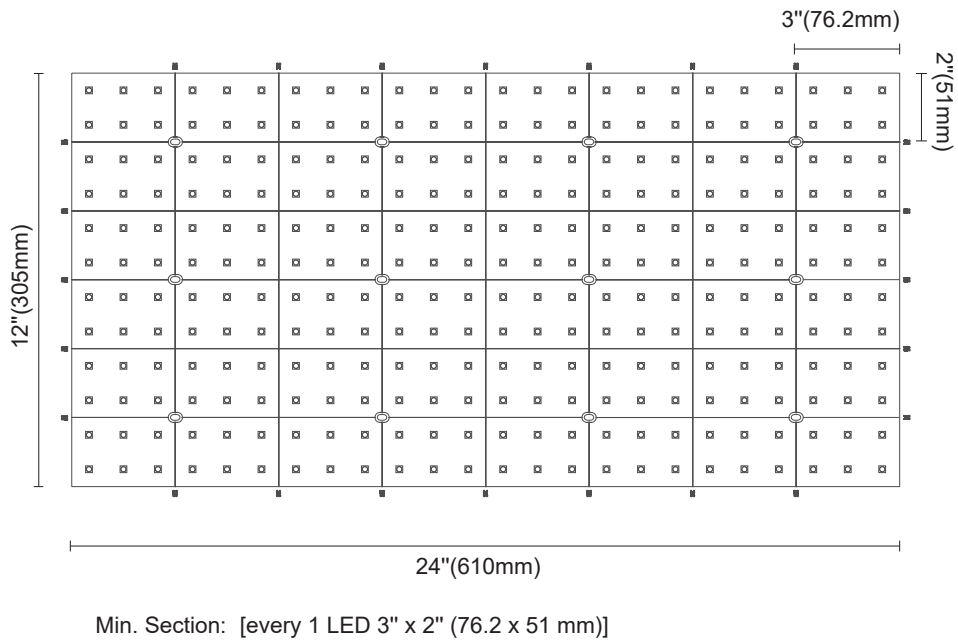




- FLEXGLOW RGBW

- 4 in 1 with colours of red, green, blue and warm white.
- Flexible and cuttable every 80.0 X 53.3 mm and 76.2 X 50.8 mm.
- Long lifespan with great lumen maintenance.
- Create rich colour changing effect via controller.
- Dimmable with PWM Technology.
- Back-lit lightbox with depth above 4cm, curved wall, ceiling etc.
- Waterproof: IP64 [Spray Glue Coated) / Nonwaterproof IP22 options available.
- 5 Year warranty indoor use .

Wattage	11.5W / 34.5W / 46W per sheet
Efficacy	Upto 90 Lm/W (White LED)
Lumens	Upto 2200lm/Pc.
CRI	80+
LED (Options)	Red Green Blue White (3000K)
Dimming	0-10V / DALI



Flexglow Shapes

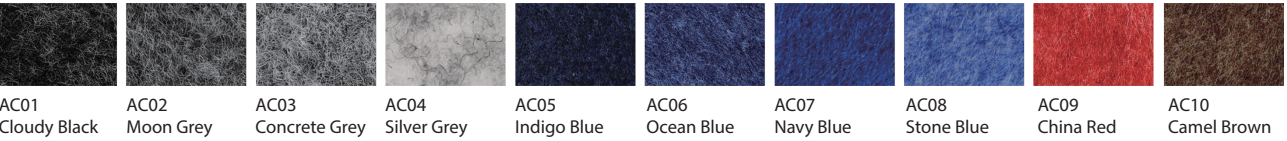




- FLEXGLOW ROUND

- Made up with Aluminum Housing with Optic Grade Opal PMMA diffuser used for maximum output.
- CRI90+ up to 104lm/w.
- Can be available in Custom size, Please contact sales representative.
- Color Consistency : 3SDCM (typical) / 5SDCM (Optional).
- Indoor Use: IP22 available.
- 5 Year warranty .

QUICK SHIPPING ACOUSTIC COLOUR ITEMS



Sizes 450mm (17.7") / 600mm (24") / 750mm (29.5") / 900mm (36") / 1200mm (48")

Finish Matt White - RAL9016 / Matt Black - RAL9017 / Matt Sere - RAL9000

 Surface , Pendant

Wattage 40W / 60W / 72W / 92W / 140W

Efficacy Upto 88 Lm/W

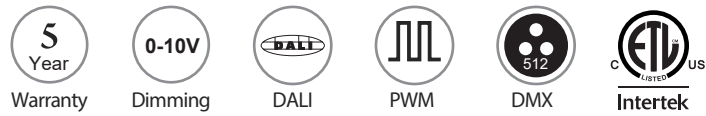
Lumens Upto 12365lm

CRI 90+

CCT 3000K / 4000K / 6000K

Dimming 0-10V / DALI / PWM / PUSH

OTHER ACOUSTIC COLOUR OPTIONS:

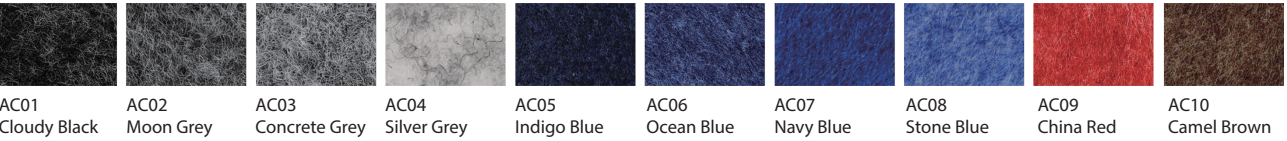




- FLEXGLOW HEXAGON

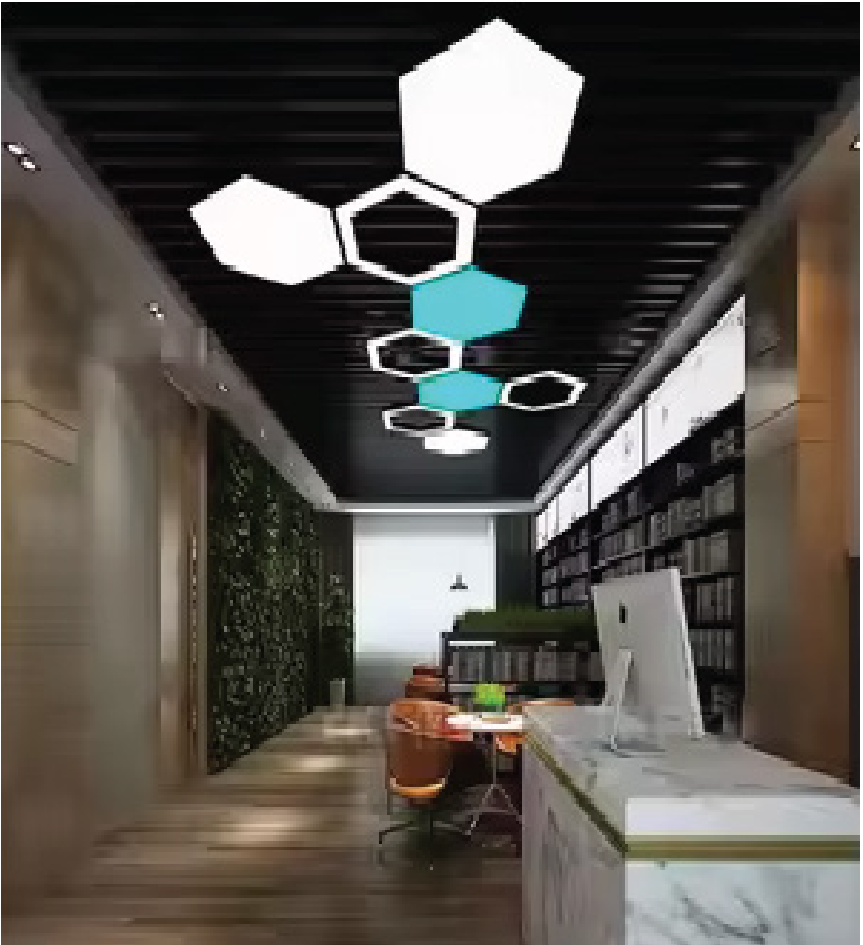
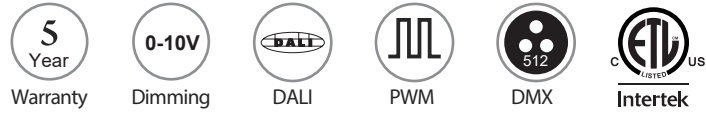
- Made up with Aluminum Housing with Optic Grade Opal PMMA diffuser used for maximum output.
- CRI90+ up to 88lm/w.
- Can be available in Custom size, Please contact sales representative.
- Color Consistency : 3SDCM (typical) / 5SDCM (Optional).
- Indoor Use: IP22 available.
- 5 Year warranty .

QUICK SHIPPING ACOUSTIC COLOUR ITEMS

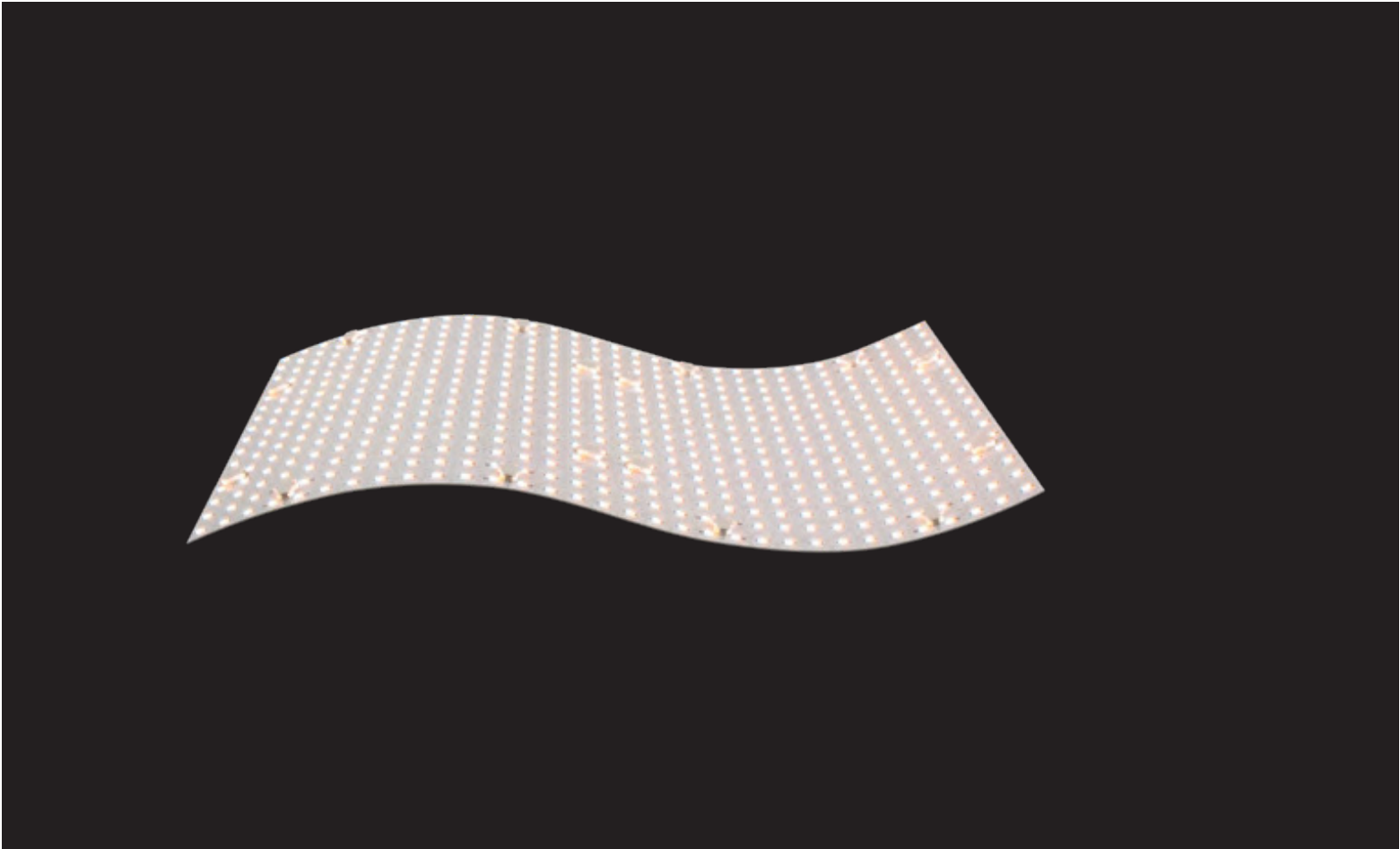


Sizes	745mm (29.3") / 1200mm (48")
Finish	Matt White - RAL9016 / Matt Black - RAL9017 / Matt Sere - RAL9000
Mounting	Surface , Pendant
Wattage	72W / 142W
Efficacy	Upto 88 Lm/W
Lumens	Upto 12365lm
CRI	90+
CCT	3000K / 4000K / 6000K
Dimming	0-10V / DALI / PWM / PUSH

OTHER ACOUSTIC COLOUR OPTIONS:



Flexglow Custom



Sizes	Fully Customize
Finish	White / Black / Clear Anodized
Mounting	Recessed , Surface , Pendant
Efficacy	Upto 119 Lm/W
Lumens	Upto 1072.3 lm (Premium), 536.1 lm (Standard)
CRI	90+
CCT	2200K / 2700K / 3000K / 3500K / 4000K / 5000K / 6200K
Dimming	0-10V / DALI



- FLEXGLOW CUSTOM

- With HELIUM LYTE Flexglow Full solution ,Creating an immersive space that makes you feel englobed by the surrounding light, similarly as when you are outside.
- Vast experience in backlighting, We have the perfect distance between the light source and the diffuser. This creates a perfectly homogeneously lit surface.
- Offers a light weight solution, thanks to its advanced lighting technology and mechanical design.
- With an NRC of 0.8 the LightTexSilent diffuser option can provide the perfect solution for any acoustics.
- The fixture will seamlessly integrate into any space, whether it is T-bar mounted, recessed, suspended or surface mounted. gives you constant access to the plenum above with its easily removable parts.
- A seamless fabric to provide homogeneous edge to edge illumination (Frame-less) design.
- Comes pre-wired with integral drivers and controllers. This makes it a quick plug and play installation.
- different options of diffuser offer a Class A or B fire rating.
- 5 Year warranty indoor use .



NOTES

[illegible]