

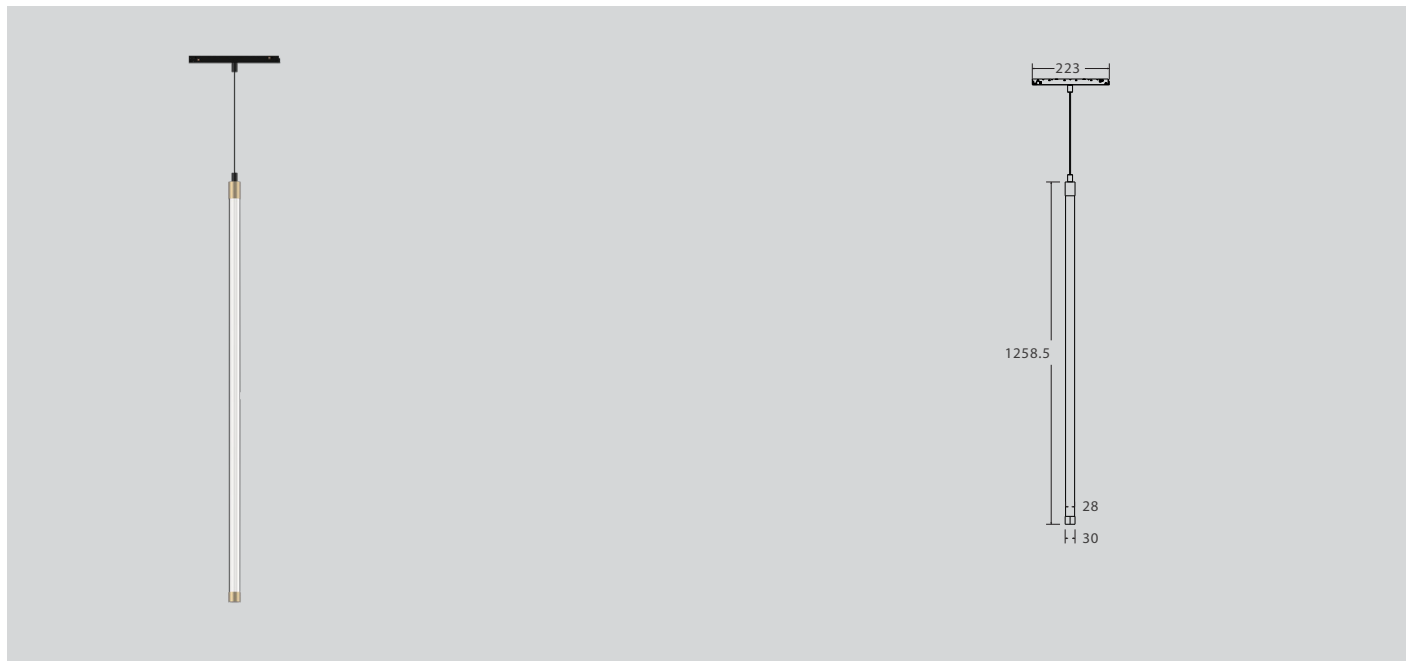
Type:\_\_\_\_\_ Qty:\_\_\_\_\_

Project:\_\_\_\_\_



HELIUM LYTE

# TWIG



## Design Features:

- Easily repositioned on site.
- Premium aluminium & Glass housing.
- Made with high powered OSARAM led chip that maintains high lumens per watt.
- Available with 360° beam angle.
- Specifiable color temperature.
- CRI > 90
- 0-10V and DALI Dimming option available.
- 5 Year warranty.



Warranty



Dimming



DALI



Intertek

# TWIG



\*Ref. Image

## Specs Code:

FIXTURE ID <span>1</span>	LUMENS / WATT <span>2</span>	LED OPTION <span>3</span>	DIMMING <span>4</span>	BEAM ANGLE <span>5</span>
TWIG <b>TWIG</b>	L1700/20W <b>L170/20W</b>	2700K <b>27K</b> 3000K <b>30K</b> 3500K <b>35K</b> 4000K <b>40K</b>	0-10V <b>DMV</b> DALI <b>DALI</b>	360 Degree <b>360D</b>
FINISH <span>6</span>	ACCESSORIES <span>7</span>			
White <b>WH</b> Black <b>BLK</b> Gold <b>GLD</b> Silver <b>SLR</b>	Not Applicable <b>NA</b>			

## Ordering Code:

1
2
3
4
5
6

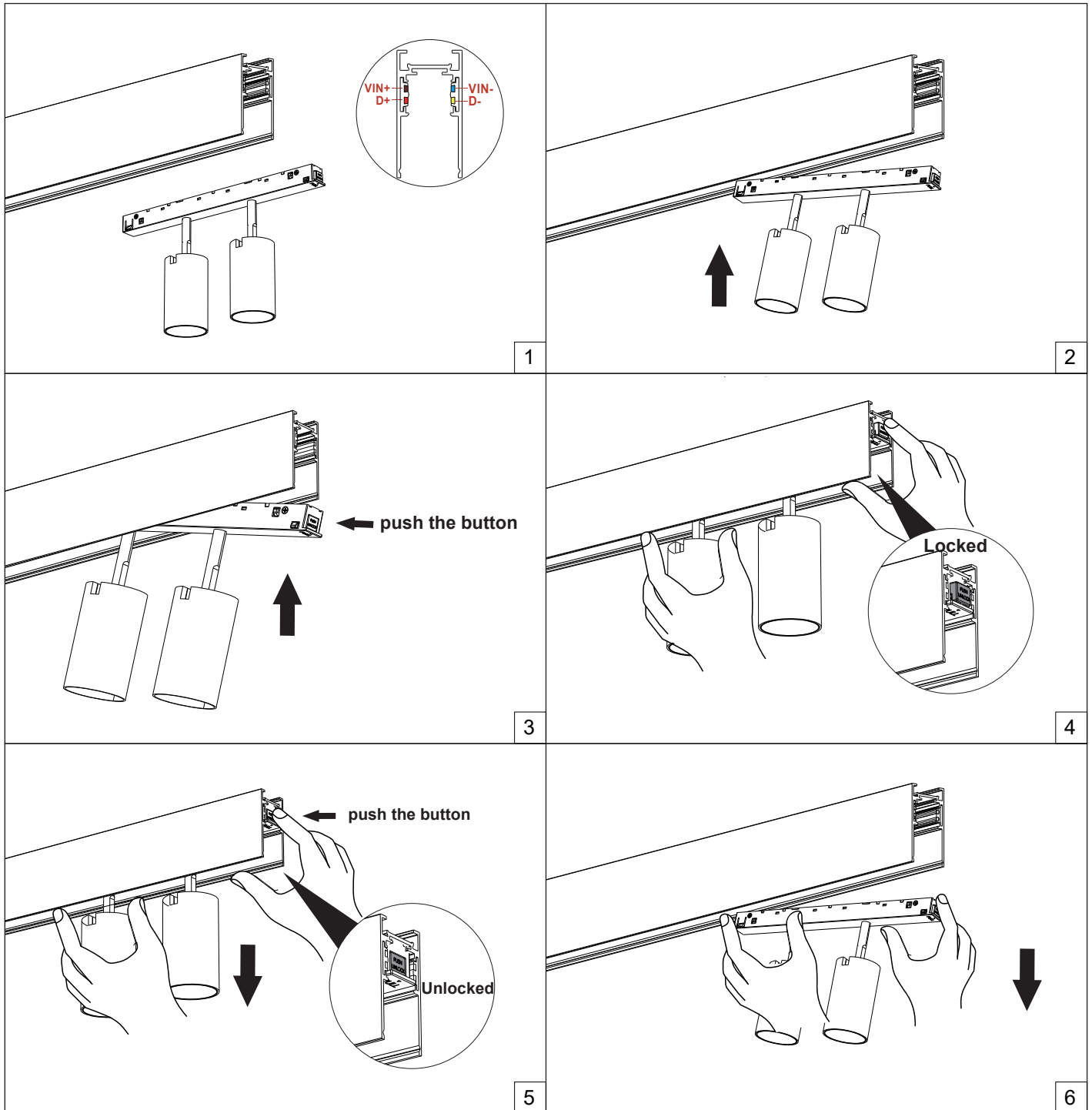
7

\*Example : TWIG-L170/20W-30K-DMV-360D-GLD-NA



# TWIG

## Mounting Details:





# TWIG

Photometric:

Lighting Chart:

WATT	LUMENS	CCT	CRI
20W	1700 lm	3000K	CRI90



Warranty



Dimming



DALI



Intertek



# TWIG

## Technical Details:

Material	Aluminium & Glass
Head Style	Fixed
Finish	White / Black / Gold / Silver
Lumens	Upto 1700lm
Wattage	20W
Efficacy	85 Lm/W
UGR	<19
CRI	90+
CCT	2700K / 3000K / 3500K / 4000K
Beam Angle	360°
Dimming	DALI / 0-10V
Operating Temp.	-20°C ~ 40°C (-4°F ~ 104°F)
Voltage	120V / 120-277V
Housing	Non IC Rated / IC Rated
Certification	ETL LISTED / DRY RATED



Warranty



Dimming



DALI



Intertek