

Type: \_\_\_\_\_ Qty: \_\_\_\_\_

Project: \_\_\_\_\_



HELIUM LYTE

# CUBIC 10



## Design Features:

---

- Easily repositioned on site.
- Premium aluminium housing.
- Made with high powered OSARAM led chip that maintains high lumens per watt.
- Available with 30° beam angle.
- Specifiable color temperature.
- CRI > 90
- 0-10V and DALI Dimming option available.
- 5 Year warranty.



Warranty



Dimming



DALI



Intertek

# CUBIC 10



\*Ref. Image

## Specs Code:

FIXTURE ID <b>1</b>	LUMENS / WATT <b>2</b>	LED OPTION <b>3</b>	DIMMING <b>4</b>	BEAM ANGLE <b>5</b>
CUBIC10 <b>CUBIC10</b>	L1000/10W <b>L100/10W</b>	2700K <b>27K</b> 3000K <b>30K</b> 3500K <b>35K</b> 4000K <b>40K</b>	0-10V <b>DMV</b> DALI <b>DALI</b>	30 Degree <b>30D</b>
FINISH <b>6</b>	ACCESSORIES <b>7</b>			
White <b>WH</b> Black <b>BLK</b>	Not Applicable <b>NA</b>			

## Ordering Code:

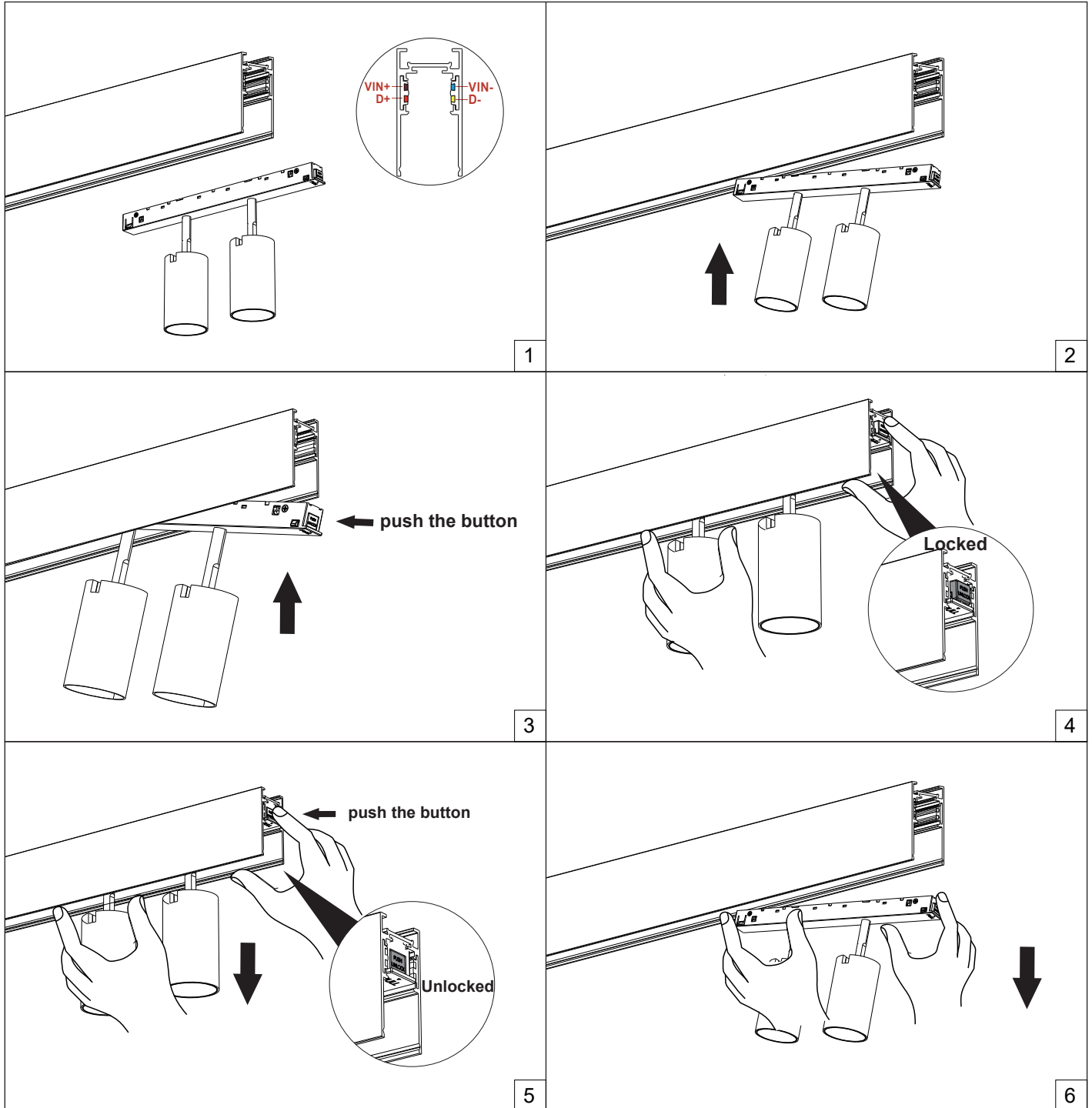
<b>1</b>	<b>2</b>	<b>3</b>	<b>4</b>	<b>5</b>	<b>6</b>
<b>7</b>					

\*Example : CUBIC10-L100/10W-30K-DMV-30D-BLK-NA



# CUBIC 10

## Mounting Details:





# CUBIC 10

Photometric:

## Lighting Chart:

WATT	LUMENS	CCT	CRI
10W	1000 lm	3000K	CRI90



Warranty



Dimming



DALI



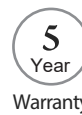
Intertek



# CUBIC 10

## Technical Details:

Material	Extruded Aluminium
Head Style	Fixed
Finish	White / Black
Lumens	Upto 1000lm
Wattage	10W
Efficacy	100 Lm/W
UGR	<19
CRI	90+
CCT	2700K / 3000K / 3500K / 4000K
Beam Angle	30°
Dimming	DALI / 0-10V
Operating Temp.	-20°C ~ 40°C (-4°F ~ 104°F)
Voltage	120V / 120-277V
Housing	Non IC Rated / IC Rated
Certification	ETL LISTED / DRY RATED



Warranty



Dimming



DALI



Intertek