

# SILENTIUM INSTALLATION - IC BOX

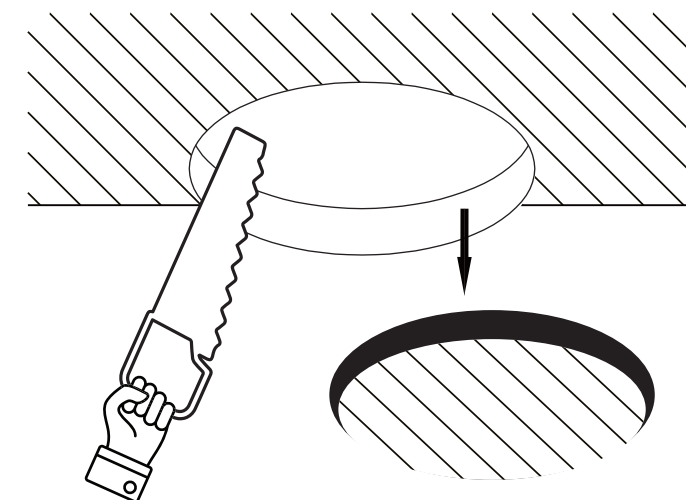


HELIUM LYTE

## Installation Instructions

- 1.The fixture is for LED.
- 2.Before installation,make sure that the power supply is off.
- 3.Follow the steps as shown below for installation.
- 4.After finishing every step, tighten the screws, have the fixture fixed,then connect the power supply.
- 5.It is recommended that these products are installed by a qualified electrician.
- 6.The light source in this luminaire should be replaced by the manufacturer or its service agent or similarly qualified person.
- 7.Under no circumstances should the luminaire be covered by thermal insulation pads and similar materials.
- 8.Install per national installation and accident prevention regulations.

### STEP1

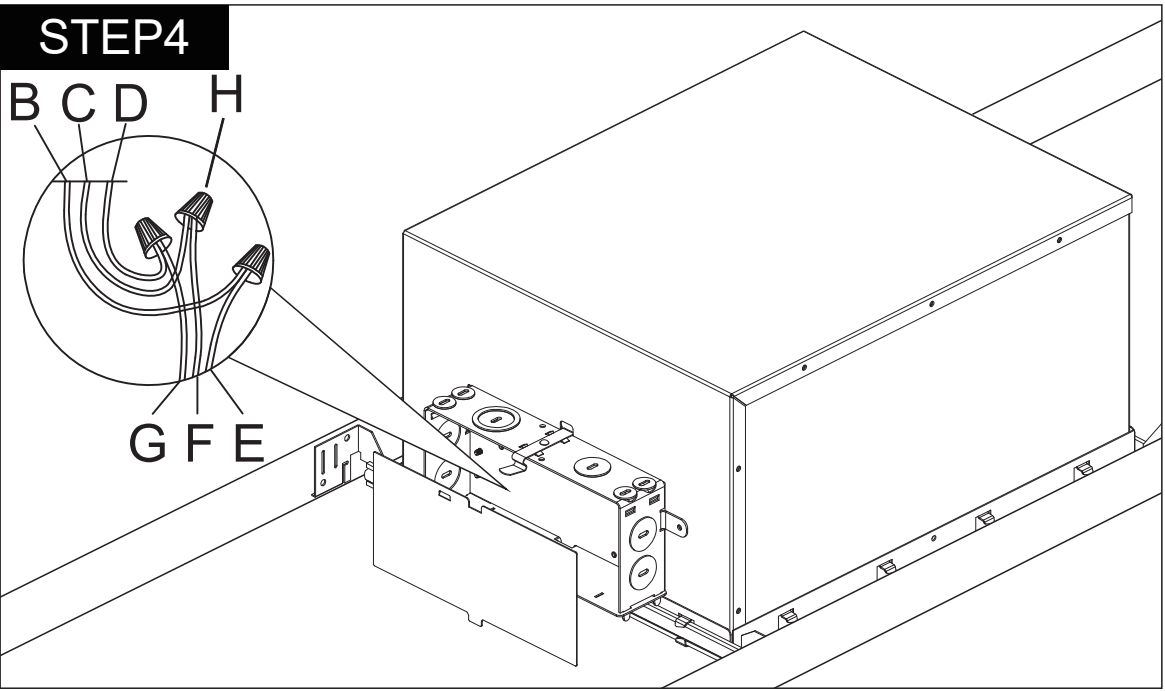
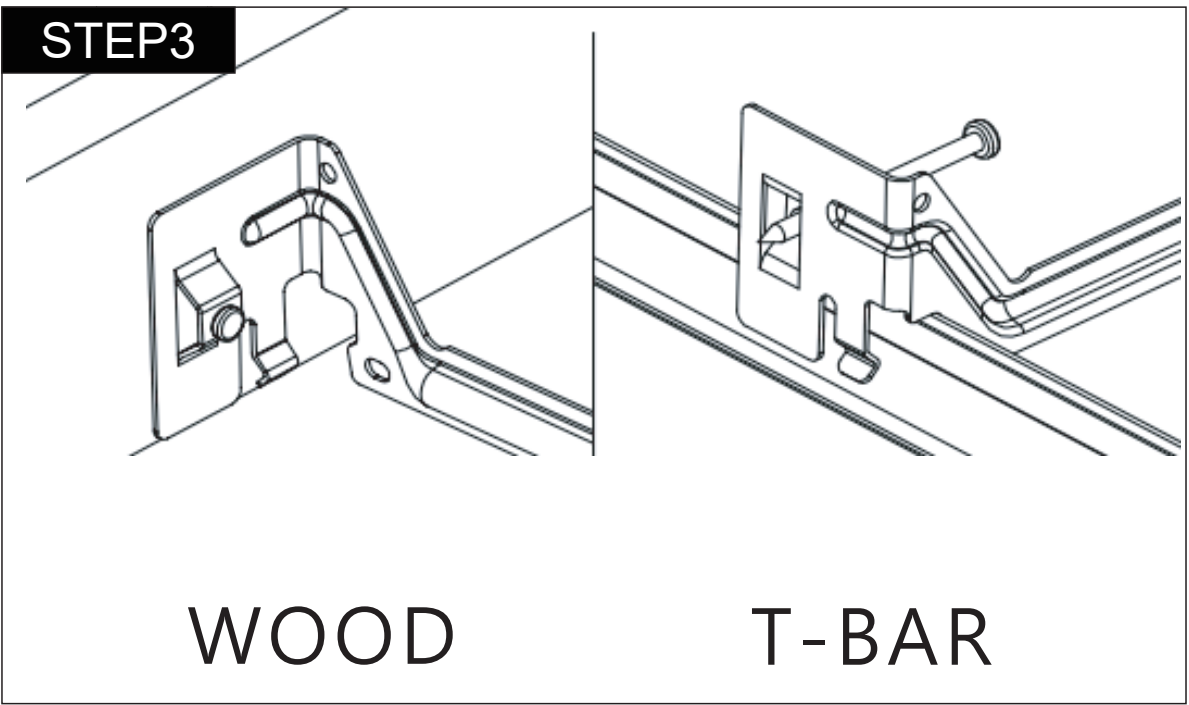
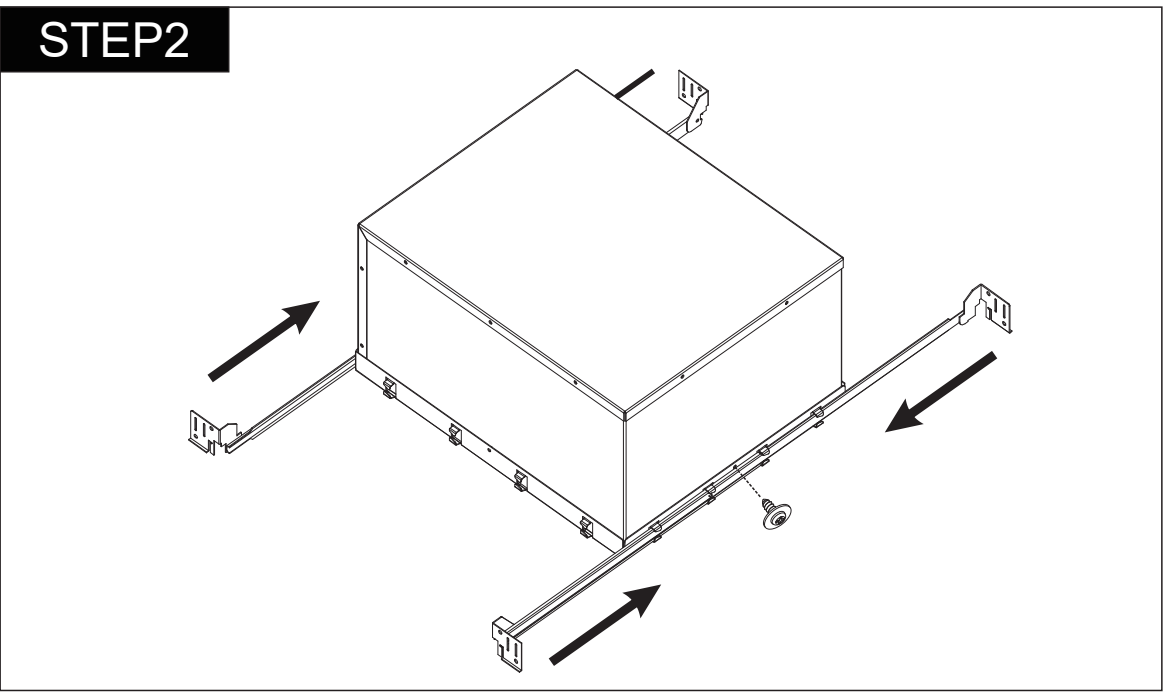


Please make sure cut out should be according to fixture size

# SILENTIUM INSTALLATION - IC BOX



## IC BOX Installation:

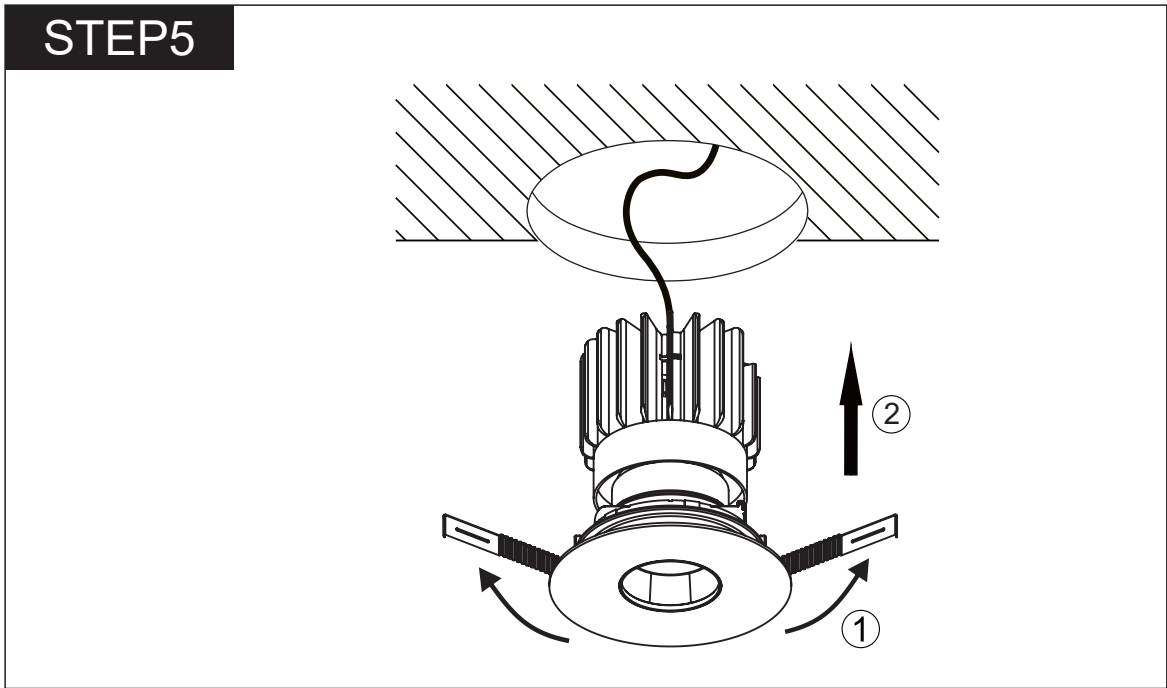


- B**-Black wire(L) from junction box
- C**-White wire(N) from junction box
- D**-Green wire/Bare copper (G) from junction box
- E**-Black wire (L) from fixture
- F**-White wire (N) from fixture
- G**-Green wire/Bare copper from fixture
- H**-Wire connector x 3

# SILENTIUM INSTALLATION - IC BOX



STEP5



STEP6

