

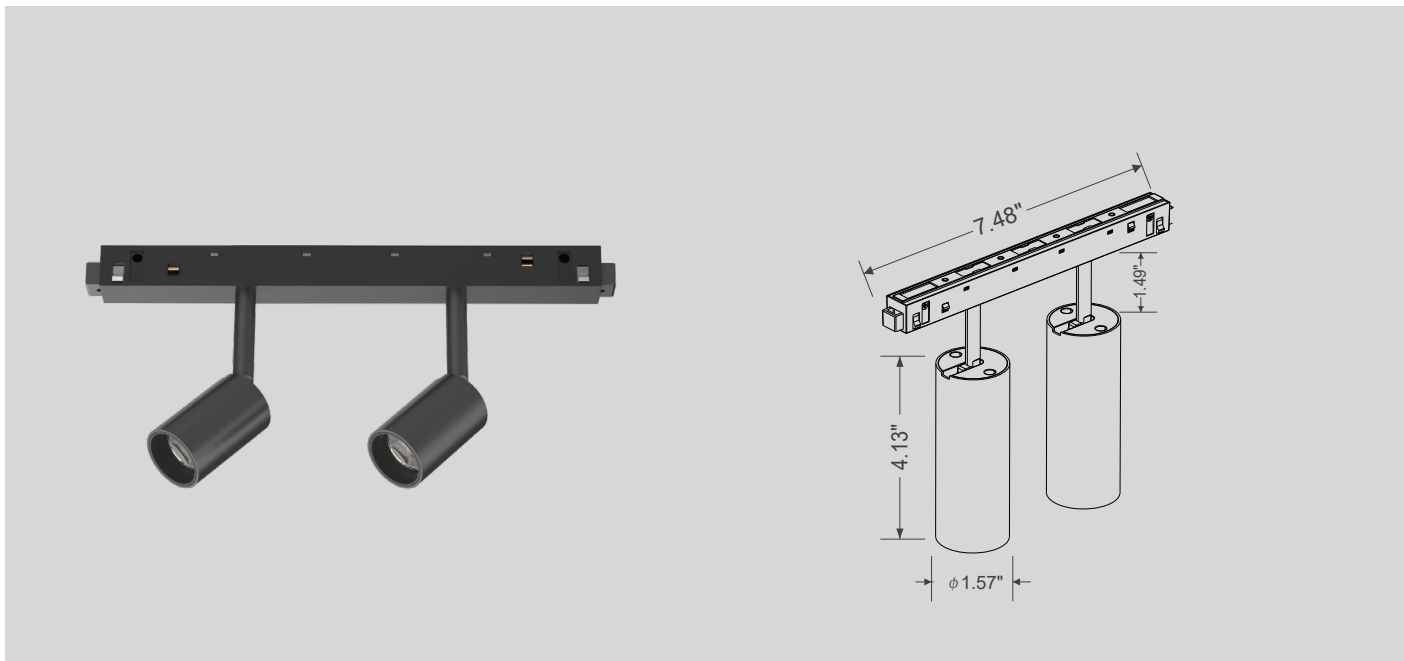
Type:_____ Qty:_____

Project:_____



HELIUM LYTE

SPOT DUO 24



Design Features:

- Easily repositioned on site.
- Premium aluminium housing.
- Made with high powered CITIZEN led chip that maintains high lumens per watt.
- Available with 18°/ 30°/ 45° beam angle.
- Specifiable colour temperature.
- CRI > 90
- 0-10V and DALI Dimming option available.
- 5 Year warranty.



Warranty



Dimming



DALI



Intertek

SPOT DUO 24



*Ref. Image

Specs Code:

FIXTURE ID 1	LUMENS / WATT 2	LED OPTION 3	DIMMING 4	BEAM ANGLE 5
SPOT DUO-24 SPOTD24	L1500/24W L150/24W -For 18° & 30°	2700K 27K	0-10V DMV	18 Degree 18D
		3000K 30K	DALI DALI	30 Degree 30D
	L1200/24W L120/24W -For 45°	3500K 35K		45 Degree 45D
		4000K 40K		
FINISH 6	ACCESSORIES 7			
White WH Black BLK	Not Applicable NA			

Ordering Code:

1
2
3
4
5
6

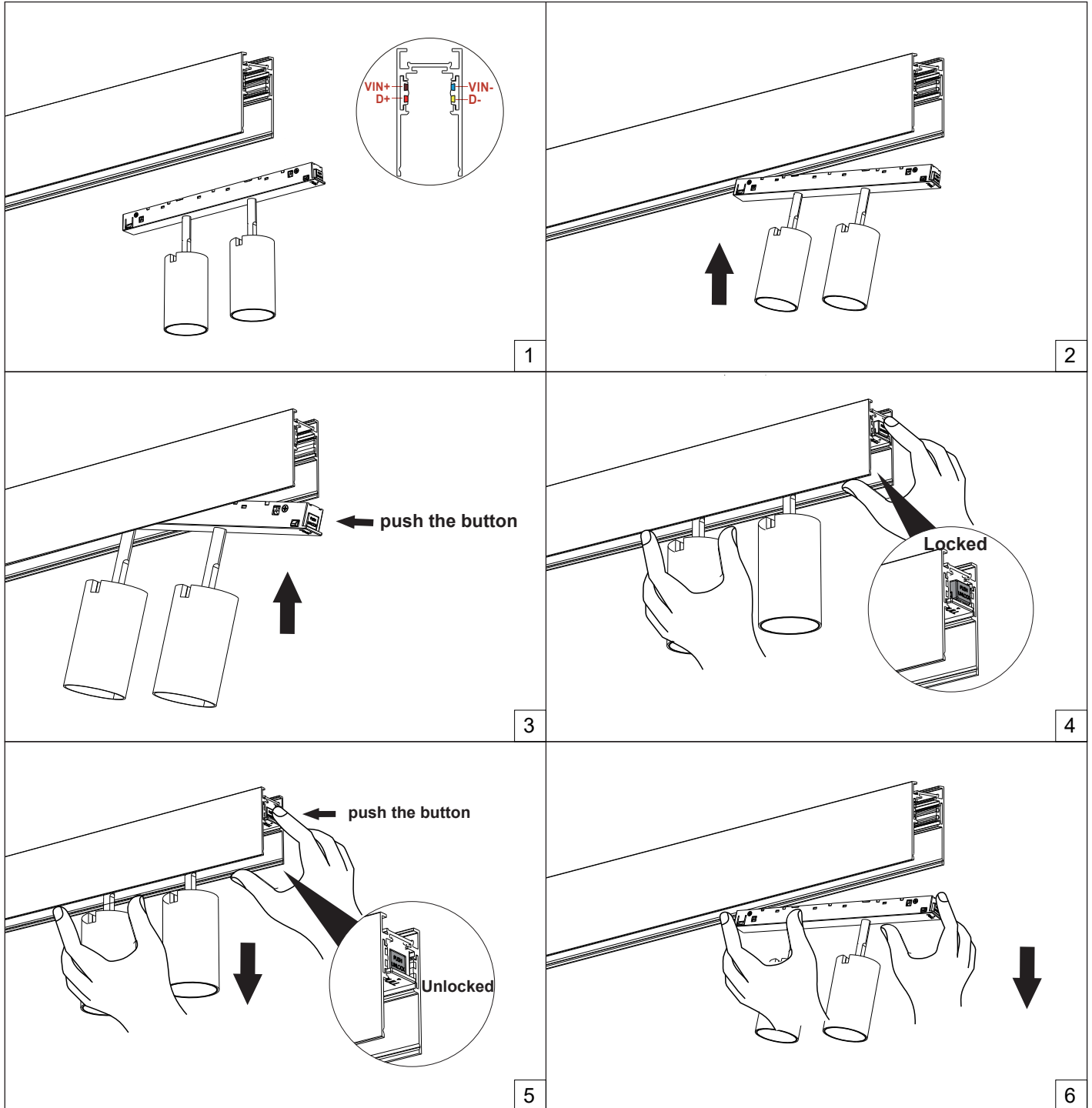
7

*Example : SPOT DUO24-L120/24W-27K-DMV-45D-BLK-NA



SPOT DUO 24

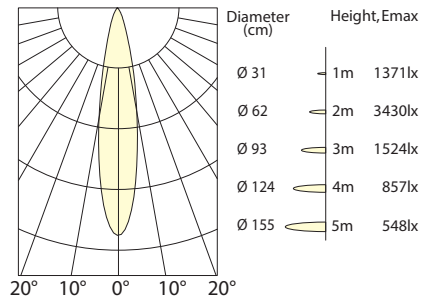
Mounting Details:



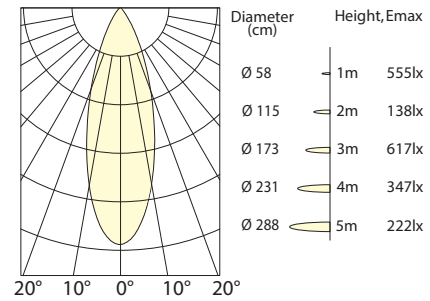
SPOT DUO 24

Photometric:

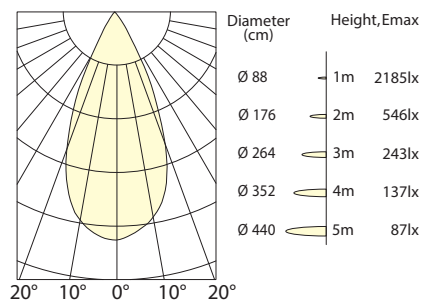
24W-18D



24W-30D



24W-45D



Lighting Chart:

WATT	LUMENS	CCT	CRI
24W	1500 lm	3000K	CRI90



SPOT DUO 24

Technical Details:

Material	Aluminium
Head Style	Adjustable
Trim Finish	White / Black
Lumens	Upto 1500lm
Wattage	24W
Efficacy	63 Lm/W
UGR	<19
CRI	90+
CCT	2700K / 3000K / 3500K / 4000K
Beam Angle	18° / 30° / 45°
Dimming	DALI / 0-10V
Operating Temp.	-20°C ~ 40°C (-4°F ~ 104°F)
Voltage	120V / 120-277V
Housing	Non IC Rated / IC Rated
Certification	ETL LISTED / DRY RATED

