

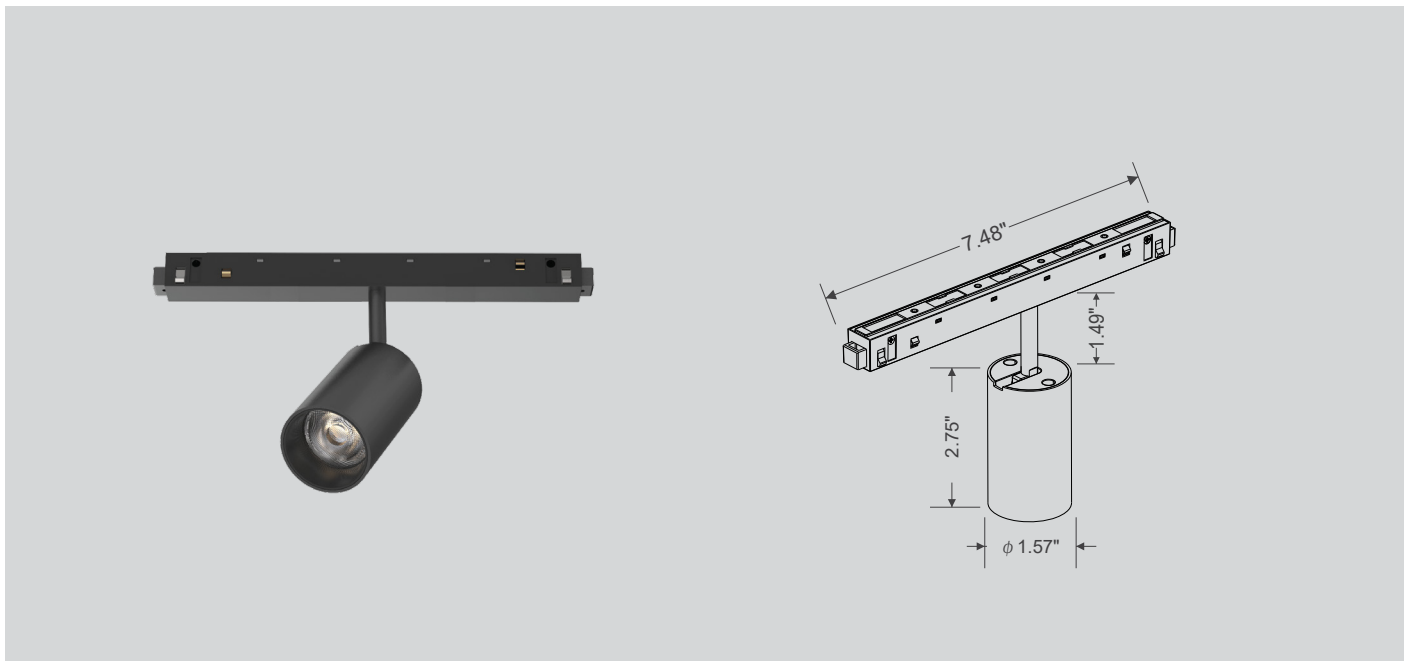
Type:\_\_\_\_\_ Qty:\_\_\_\_\_

Project:\_\_\_\_\_



HELIUM LYTE

# SPOT 8



## Design Features:

- Easily repositioned on site.
- Premium aluminium housing.
- Made with high powered CITIZEN led chip that maintains high lumens per watt.
- Available with 18°/ 30°/ 45° beam angle.
- Specifiable colour temperature.
- CRI > 90
- 0-10V and DALI Dimming option available.
- 5 Year warranty.



Warranty



Dimming



DALI



Intertek

# SPOT 8



\*Ref. Image

## Specs Code:

FIXTURE ID <span>1</span>	LUMENS / WATT <span>2</span>	LED OPTION <span>3</span>	DIMMING <span>4</span>	BEAM ANGLE <span>5</span>
SPOT-8 <b>SPOT8</b>	L580/8W -For 18° & 30°	2700K <b>27K</b> 3000K <b>30K</b>	0-10V <b>DMV</b> DALI <b>DALI</b>	18 Degree <b>18D</b> 30 Degree <b>30D</b>
	L420/8W <b>L42/8W</b> -For 45°	3500K <b>35K</b> 4000K <b>40K</b>		45 Degree <b>45D</b>
FINISH <span>6</span>	ACCESSORIES <span>7</span>			
White <b>WH</b> Black <b>BLK</b>	Not Applicable <b>NA</b>			

## Ordering Code:

1 
2 
3 
4 
5 
6

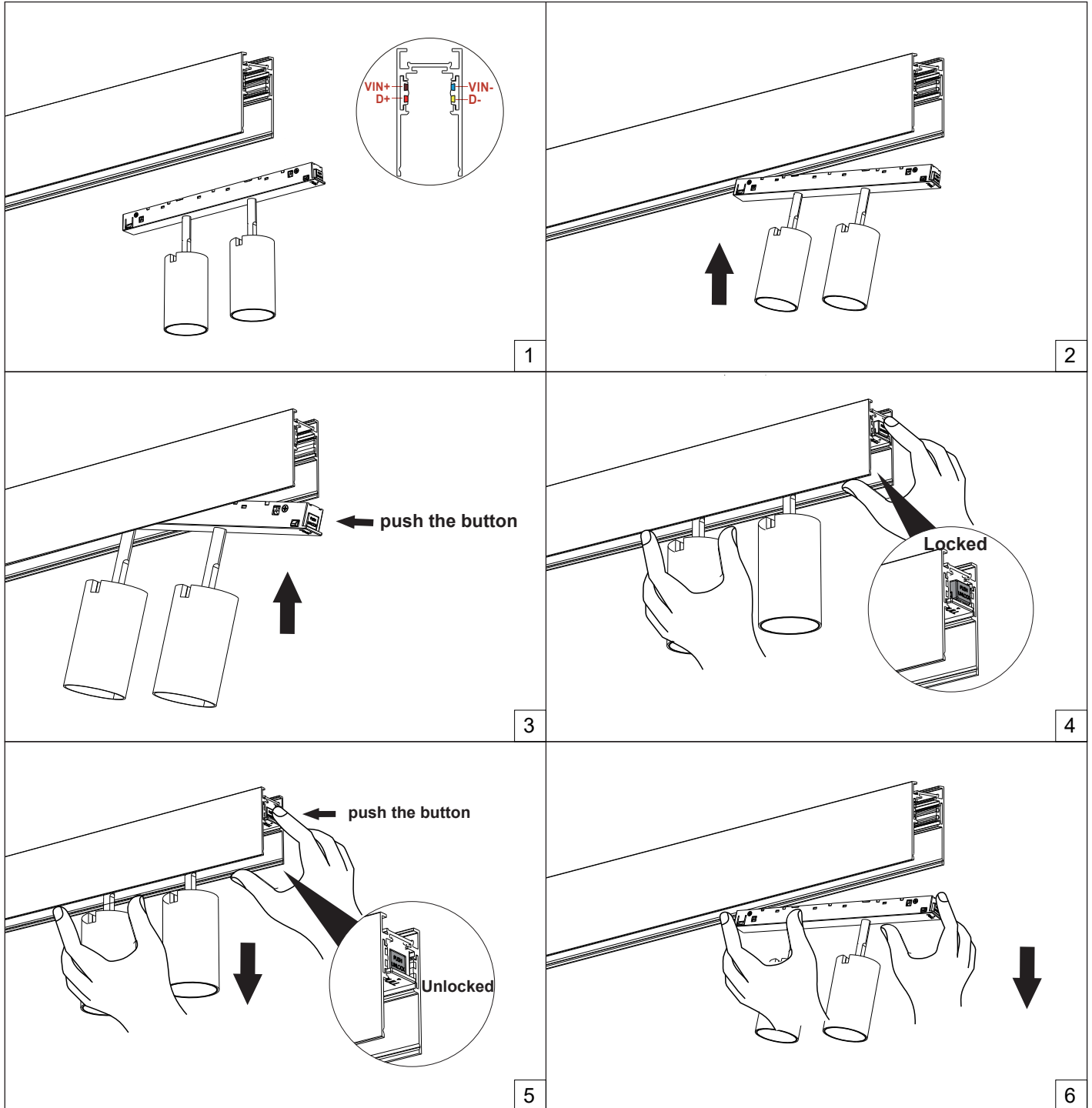
7

\*Example : SPOT8-L58/8W-27K-DMV-30D-BLK-NA



# SPOT 8

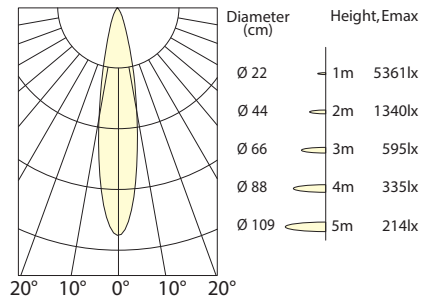
## Mounting Details:



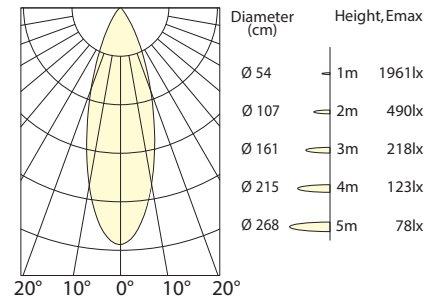
# SPOT 8

## Photometric:

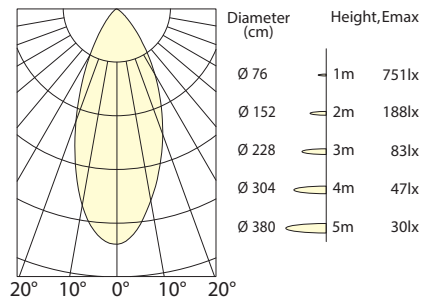
### 08W-18D



### 08W-30D



### 08W-45D



## Lighting Chart:

WATT	LUMENS	CCT	CRI
08W	580 lm	3000K	CRI90



# SPOT 8

## Technical Details:

Material	Aluminium
Head Style	Adjustable
Trim Finish	White / Black
Lumens	Upto 580lm
Wattage	08W
Efficacy	73 Lm/W
UGR	<19
CRI	90+
CCT	2700K / 3000K / 3500K / 4000K
Beam Angle	18° / 30° / 45°
Dimming	DALI / 0-10V
Operating Temp.	-20°C ~ 40°C (-4°F ~ 104°F)
Voltage	120V / 120-277V
Housing	Non IC Rated / IC Rated
Certification	ETL LISTED / DRY RATED

