

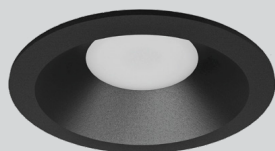
Type:_____ Qty:_____

Project:_____

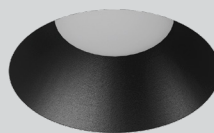


HELIUM LYTE

INSPIRA 2



Round Trim



Round Trimless

Design Features:

- Inspira 2D fixed 2" Downlight offers specification-grade performance and features, in a completely modular & field-configurable system. Every light engine integrates with any of the trims, and every trim works with all of the ceiling application and housing options.
- Made with high powered BRIDGELUX led chip that maintains high lumens per watt with 90 +CRI / Fixture comes with both Single CCT and Dim To Warm options.
- Available in both TRIAC and 0-10V dimming.
- Standard remodel installation, new construction housing available.
- LED modules and drivers are easily replaceable.
- Extruded aluminium heat sink ensures optimal heat dissipation and LED life.
- 5 Year warranty.



Warranty



Damp Rated



TRIAC



Dimming



Intertek

INSPIRA 2

Specs Code:

FIXTURE ID 1	TRIM OPTION 2	TRIM FINISH 3	LUMENS/ WATT 4	LED OPTION 5
Inspira 2 Round INS2RO	Trim TRM	White WH	L700 / 09W L70/09W	2700K 27K
	Trimless TRML	Black BLK	L1200 / 14W L12/14W	3000K 30K
		Custom CSTM	L1700 / 24W L17/24W	3500K 35K
				4000K 40K
				5000K 50K
				Dim To Warm DTW
BEAM ANGLE 6	DIMMING 7	HOUSING* 8	VOLTAGE 9	
15 Degree 15D	TRIAC TRIAC	New Construction NC	120V 120V	
24 Degree 24D	0-10V DMV	Remodel RMOD	120-277V UNV	
36 Degree 36D				
60 Degree 60D				

*Inspira is not available with an IC box configuration.

Order Guide:

1	2	3	4	5	6
<input type="text"/>	<input type="text"/>	<input type="text"/>	<input type="text"/>	<input type="text"/>	<input type="text"/>
7	8	9			
<input type="text"/>	<input type="text"/>	<input type="text"/>			

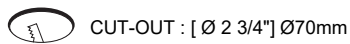
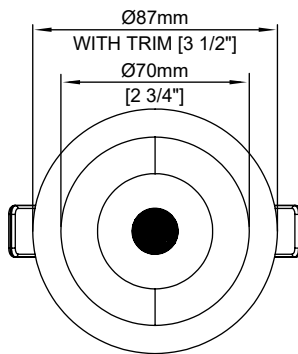
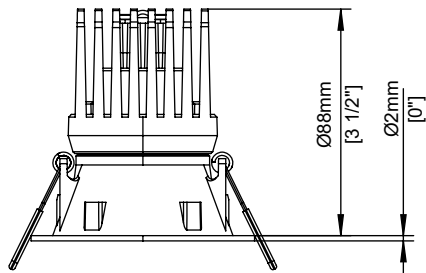
*Example : INS2RO-TRM-BLK-L70/09W-40K-60D-TRIAC-NC-UNV



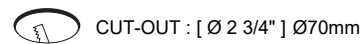
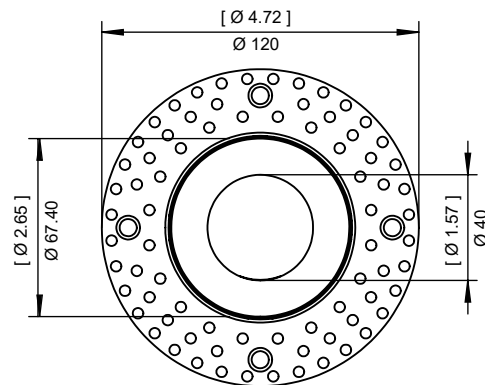
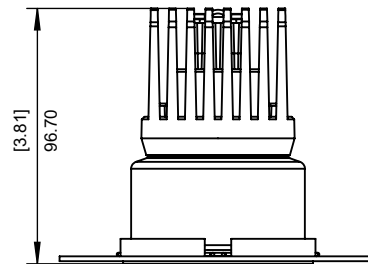
INSPIRA 2

Product Details:

Round Bevel Trim Fixed - 9W



Round Bevel Trimless Fixed - 9W



*All Dimensions are millimeters (Inches) unless otherwise indicated.



Warranty



Damp Rated



TRIAC



Dimming

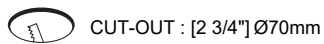
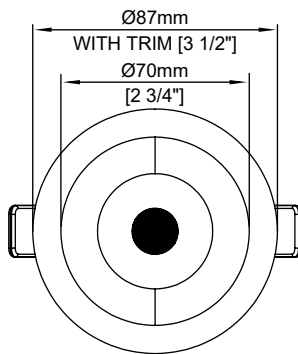
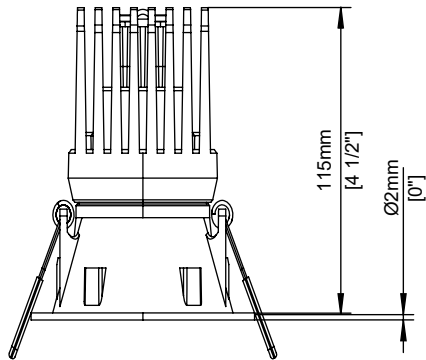


Intertek

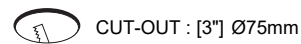
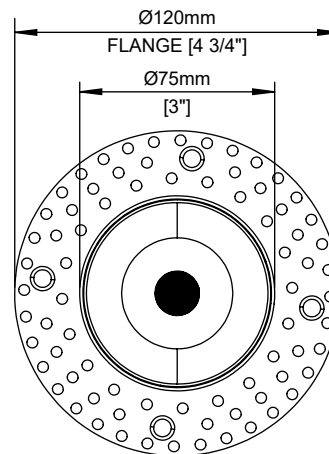
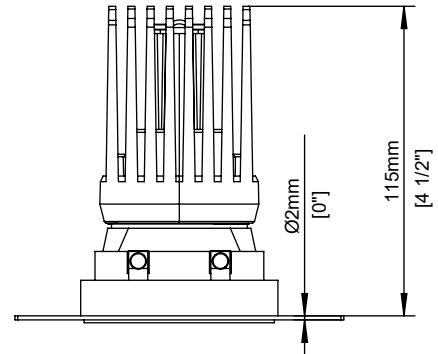
INSPIRA 2

Product Details:

Round Bevel Trim Fixed - 14W



Round Bevel Trimless Fixed - 14W



*All Dimensions are millimeters (Inches) unless otherwise indicated.



Warranty



Damp Rated



TRIAC



Dimming

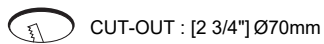
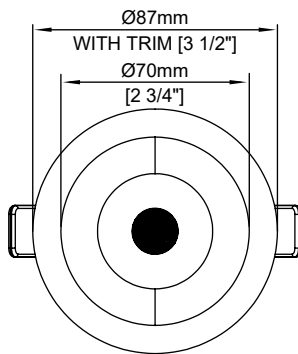
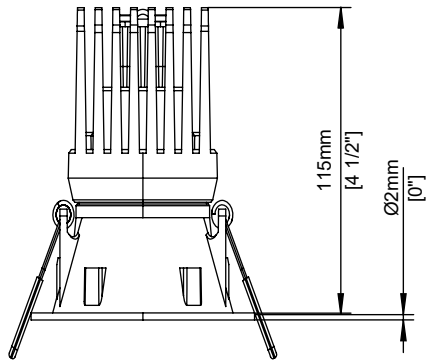


Intertek

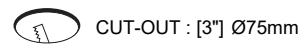
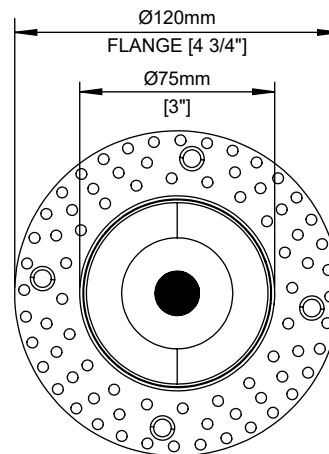
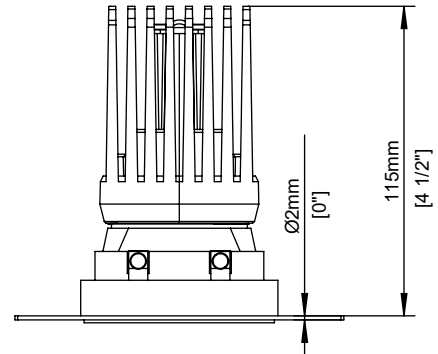
INSPIRA 2

Product Details:

Round Bevel Trim Fixed - 24W



Round Bevel Trimless Fixed - 24W



*All Dimensions are millimeters (Inches) unless otherwise indicated.



Warranty



Damp Rated



Dimming



Dimming



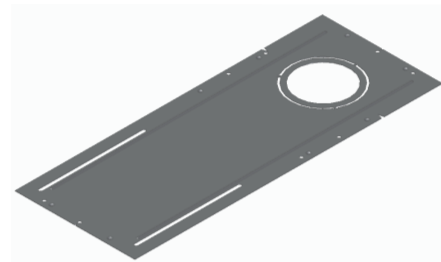
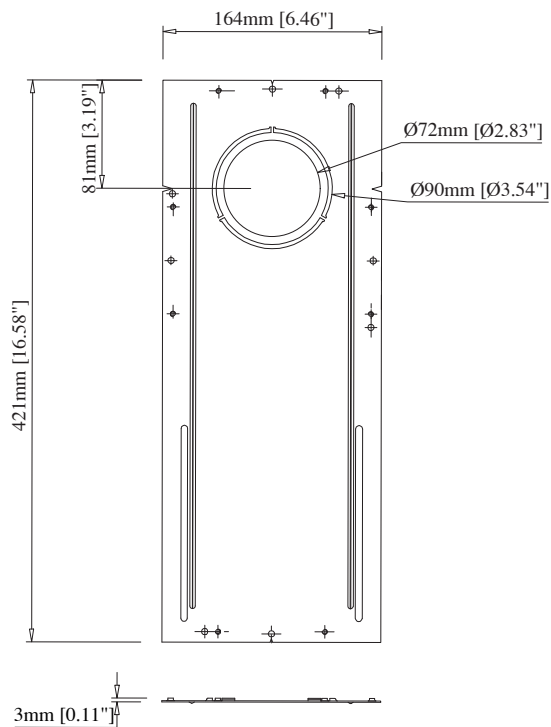
Intertek

INSPIRA 2

Product Details:

New construction housing plate for Round Downlight

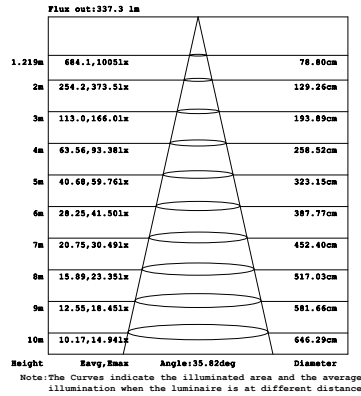
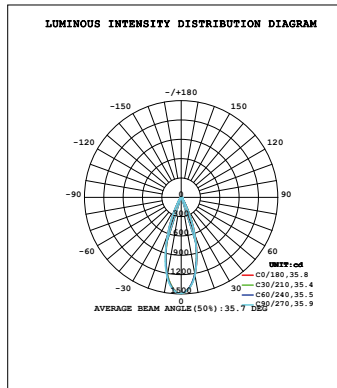
Part number - 503046



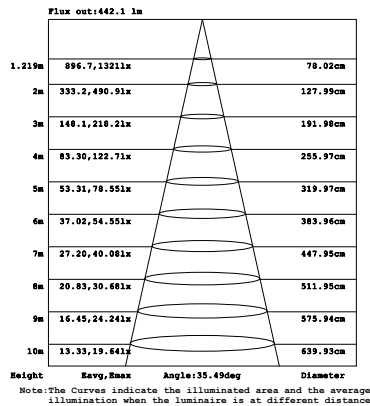
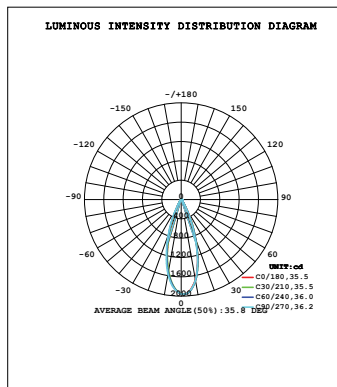
INSPIRA 2

Photometric:

Round Fixed -09W-36D



Round Fixed -14W-36D



Lighting Chart:

WATT	LUMENS	CCT	CRI
09W	700 lm	3000K	CRI90
14W	1200 lm	3000K	CRI90
24W	1700 lm	3000K	CRI90



INSPIRA 2

Technical Details:

Material	Aluminium
Trim Options	Trim / Trimless
Trim Style	Fixed
Trim Finish	White / Black
Lumens	Upto 1700lm
Wattage	09W / 14W / 24W
Efficacy	80 Lm/W
UGR	<19
CRI	90+
CCT	2700K / 3000K / 3500K / 4000K / 5000K
	/ Dim To Warm (DTW)
Beam Angle	15° / 24° / 36° / 60°
Dimming	TRIAC / 0-10V
Voltage	120V / 120-277V
Operating Temp.	-20°C ~ 40°C (-4°F ~ 104°F)
Housing	Non IC Rated / Remodel
Certification	ETL LISTED / DAMP RATED

